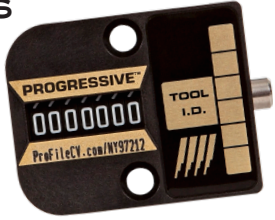


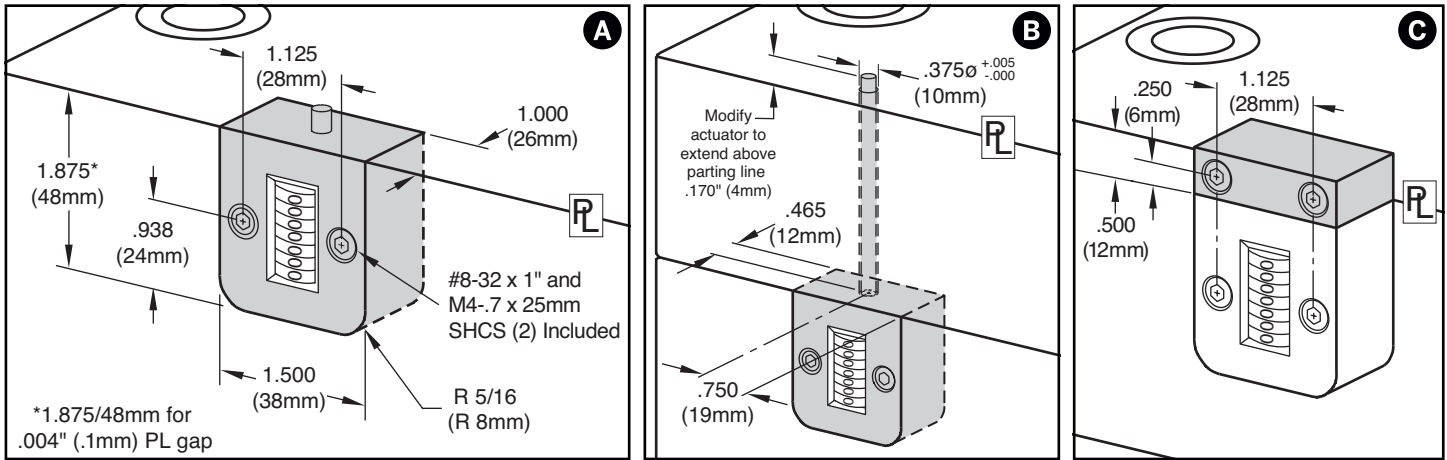
COUNTERVIEW® S-SERIES



Progressive's CounterView positively monitors mold activity, validates process monitoring data, and assists mold maintenance procedures.

- Maximum operating temperature 250°F (120°C)
- Counter: Non-resettable mechanical, 7-digit
- Available for installation on the movable or stationary halves and with extensions.

M Glass-filled Nylon housing



MOUNTING OPTIONS

Parting Line Mount	A	Parting line mount makes unit easily visible to operator.
Internal Extension Mount	B	Machinable 8" (200mm) included extension rod allows installation in support plate or rail.
External Mount	C	No pocket machining necessary. Designed specifically for retrofit applications. Order the Parting Line Mount and the CVE-EXT Block as shown below.

Operator Side: Movable Half / B Side



CATALOG NUMBER	VERSION & MOUNTING STYLE
CVPL-B	Standard: Parting Line
CVIN-B	Standard: Internal Extension

Screws included.

Operator Side: Stationary Half / A Side



CATALOG NUMBER	VERSION & MOUNTING STYLE
CVPL-A	Standard: Parting Line
CVIN-A	Standard: Internal Extension

Screws included.

Note: CounterViews can be ordered pre-set to a specific cycle count. Contact Customer Service for more information.

ACCESSORIES

CATALOG NUMBER	DESCRIPTION
CVE-EXT	External Mounting Block including #8-32 x 1" (2) and M4 x 25mm screws (2)
CVID	ID Plate for CounterView