

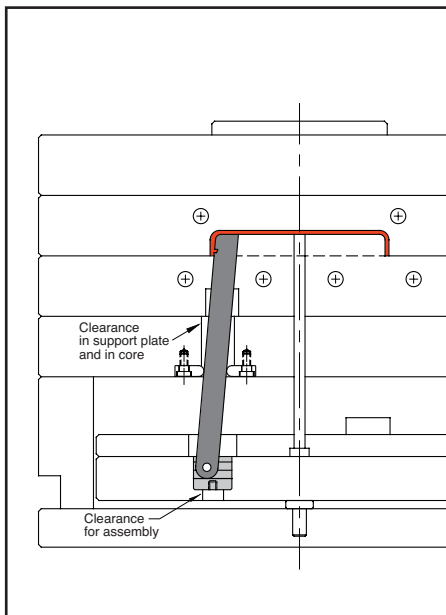
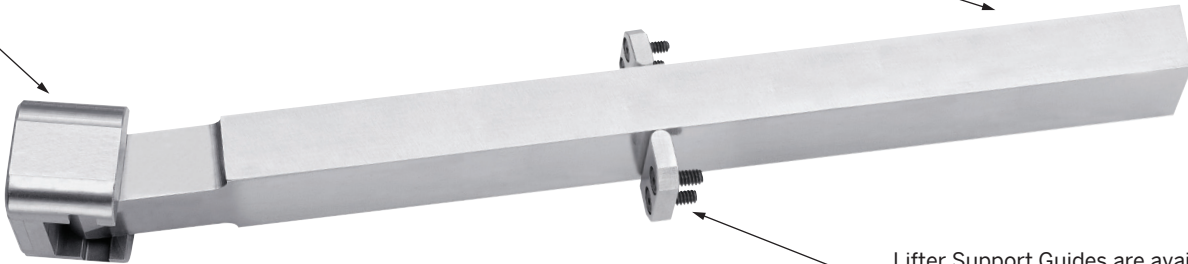
# VERSA-LIFTER™

## UNDERCUT RELEASE SYSTEM

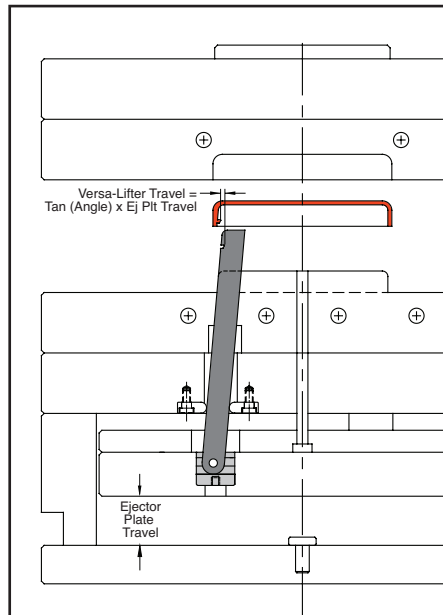
Gib Coupling retains the Core Blade and supports vertical movement.

Core Blades are manufactured from A-10 material, ready for molding detail

Lifter Support Guides are available for when support plate alignment is required.



**Mold Closed**



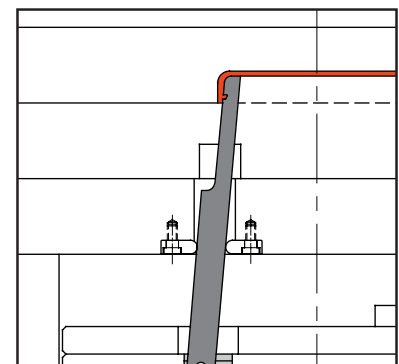
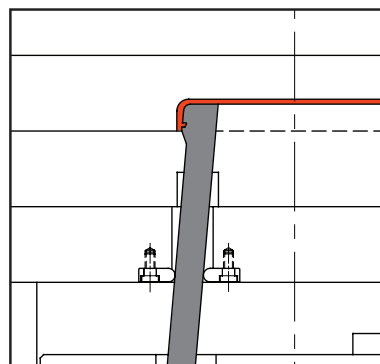
**Mold Open**

### Design Guidelines:

- Typical angles are 5-15°, but users have reported success at larger angles for unique applications with greater bearing, such as cavity side core pulls. Contact Engineering for an application review.
- Guided Ejection is required, and the Lifter Support Guides are recommended in all applications.
- Recommended total clearance is .001"-.0015" (.025-.038mm) where permissible.
- Core material should be at least 10 HRC different than the Core Blade material.
- Locking angles can be designed to counter molding pressure.
- Non-standard sizes or mold-ready Core Blades can be provided by sending a request to [tech@procomps.com](mailto:tech@procomps.com).

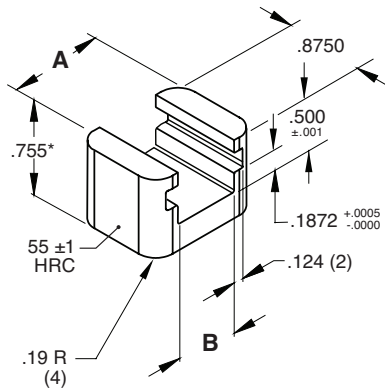
### Design Options:

- For positive return, a locking angle can be designed into the Core Blade as shown at right.
- In addition, if space is limited at parting line, the Core Blade can be stepped.





## GIB COUPLINGS

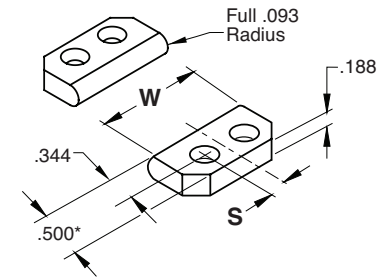


**M** S-7 **H** 54-56 HRC **S** Salt Bath Nitride

CATALOG NUMBER	A Central	B +.001 -.000	Compatible Core Blade Widths (W)	Omni Catalog Number
<b>UGV68</b>	.6860	.190	.1875 & .4375	LG-10
<b>UGV87</b>	.8735	.377	.6250	LG-20
<b>UGV112</b>	1.1235	.627	.8750	LG-30
<b>UGV137</b>	1.3735	.877	1.1250	LG-40

\*.005" stock is included on the bottom for fitting.

## VERSA-LIFTER™ LIFTER SUPPORT GUIDES

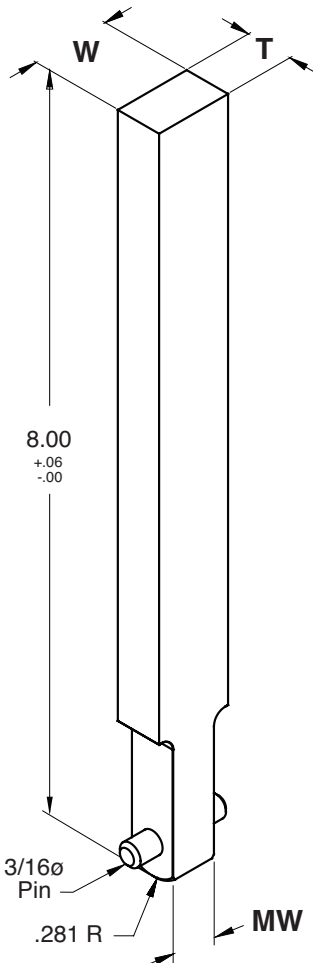


**M** S-7 **H** 54-56 HRC

CATALOG NUMBER	W	S	Omni Catalog Number
<b>SGV43</b>	.436	On Center	SG-10
<b>SGV62</b>	.624	On Center	SG-20
<b>SGV87</b>	.874	.187	SG-30
<b>SGV112</b>	1.124	.312	SG-40

Notes:

- \*Includes .005" fit stock on flat side.
- The Lifter Support Guides are sold in pairs.
- Four (4) #6-32 LHCS are included.



**M** Bohler K340 **H** 58-60 HRC

T +.0000 -.0003	CATALOG NUMBER	W +.0000 -.0003	MW +.000 -.001
.5000	<b>CBV50X18L8</b>	.1875	.188
	<b>CBV50X43L8</b>	.4375	.188
	<b>CBV50X62L8</b>	.6250	.375
	<b>CBV50X87L8</b>	.8750	.625
	<b>CBV50X112L8</b>	1.1250	.875

Pre-engineered pin is included.

### Assembly Guidelines:

- Assembly length (4") cap screw (#10-32) is included with each lifter.
- Install the assembly screw in the Gib Coupling as shown.
- Connect the lifter pin and pull unit into pocket in ejector plate, removing the screw afterwards.

## VERSA-LIFTER™ CORE BLADES

