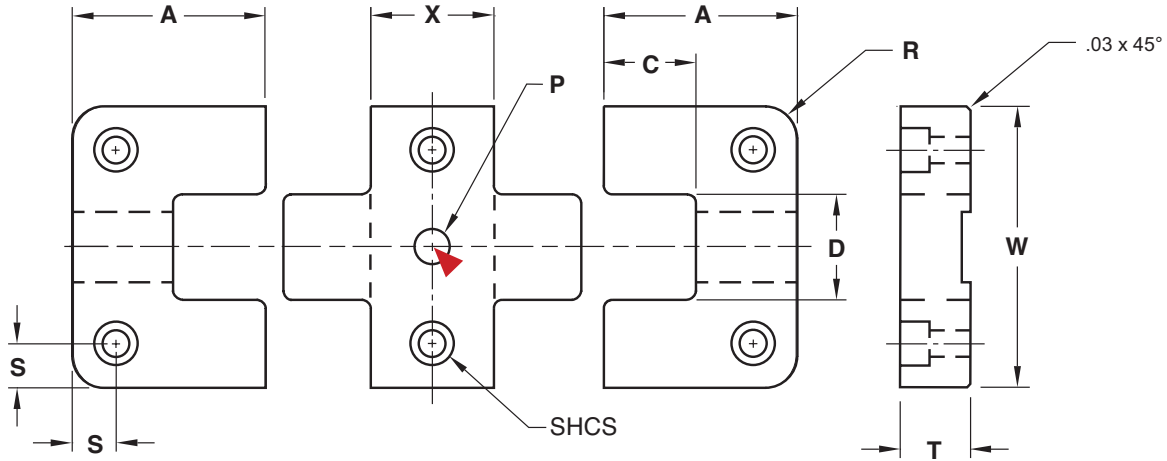
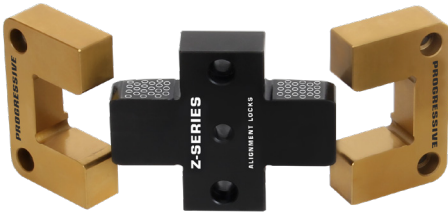


X-STYLE SIDE LOCKS

Z-SERIES



Females (2): **M** D-2 **H** Core: 58-62 HRC, Surface: 80 HRC **S** Titanium Nitride Coated

Male: **M** H-13 **H** Core: 42-48 HRC, Surface: 70 HRC **S** Salt Bath Nitride

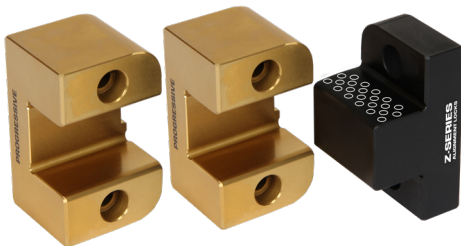
CAD insertion point

CATALOG NUMBER	T +.000 -.002	W +.0000 -.0004	X +.000 -.002	A +.000 -.002	C ±.01	D .0001/.0003 Clearance Per Side	R Pocket Radius	S ±.01	P +.001 -.000	SHCS
SLX50X87	.500	2.000	.875	1.375	.87	.750	.187	.312	.250	#10-32 x 5/8"
SLX75X137	.750	3.000	1.375	1.875	1.18	1.250	.250	.375	.313	1/4-20 x 3/4"
SLX75X187	.750	3.000	1.875	1.875	1.18	1.250	.250	.375	.313	1/4-20 x 3/4"
SLX100X137	1.000	4.000	1.375	2.375	1.43	1.500	.500	.500	.375	3/8-16 x 1"

x For custom Locks, refer to the templates in section X.

Screws included.
Note: 500°F max operating temperature.

SHUTTLE MOLD SETS



Examples of Shuttle Mold configurations:

2 Female Inserts : 1 Male Insert

To order, specify "-SF" after the catalog number of the lock.
Example: SL50X200-SF GL100X150-SF TL75X125-SF

2 Male Inserts : 1 Female Insert

To order, specify "-SM" after the catalog number of the lock.
Example: SL75X300-SM GL250X450-SM TL112X200-SM

Contact Customer Service for Pricing at CustomerService@procomps.com