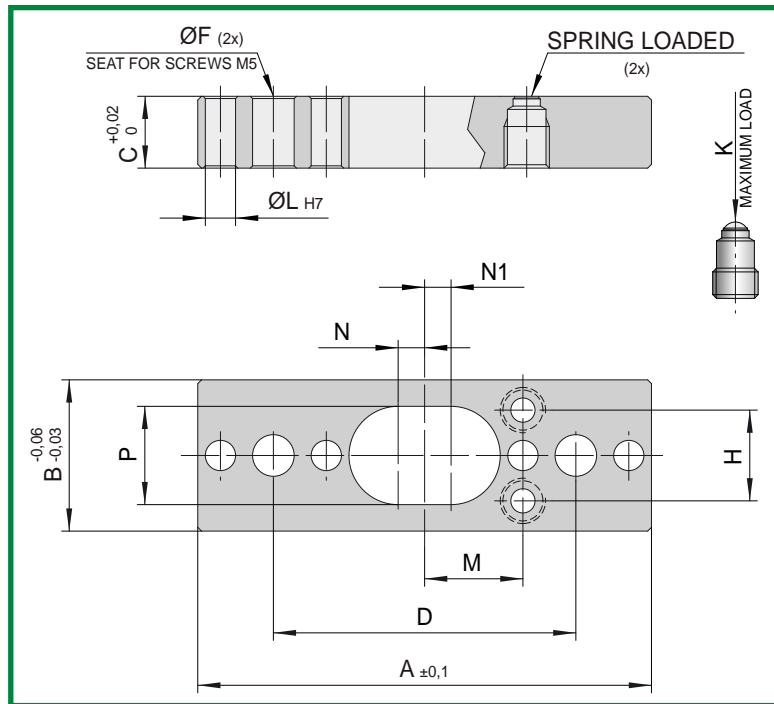


CODE: **PS12..**

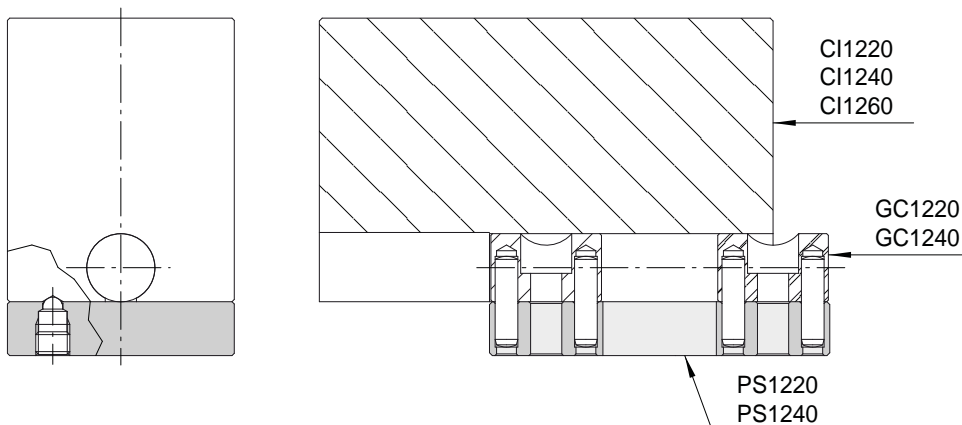


CODE	A	B	C	D	F	H	L	M	N	N1	P	K
PS1220	60	20	9,5	40	5,5	12	4	13	3,5	3,5	13	2Kg
PS1240	60	40	9,5	40	5,5	24	4	13	3,5	3,5	13	5Kg

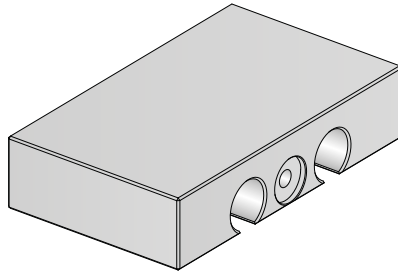
Carbon steel. Hardness: 430 HV05

Nitrided depth 0,3mm.

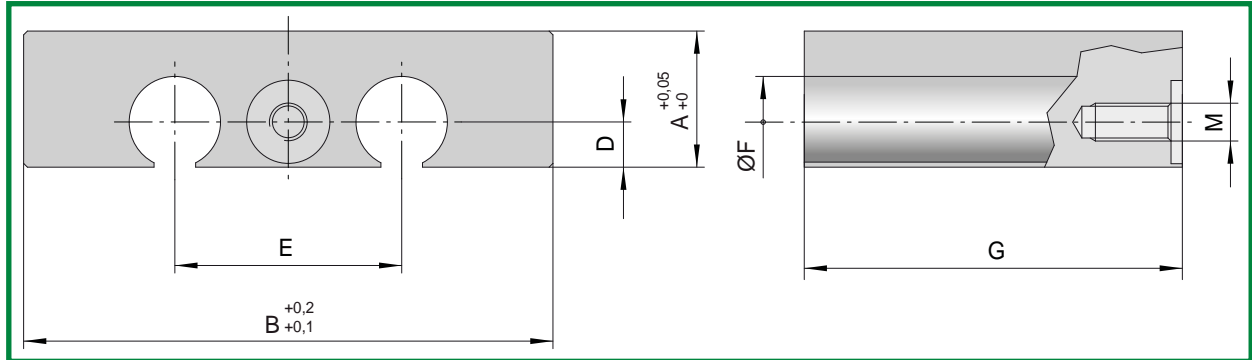
Available covered with solid antifriction lubricating.



SLIDE BEARING SET 12



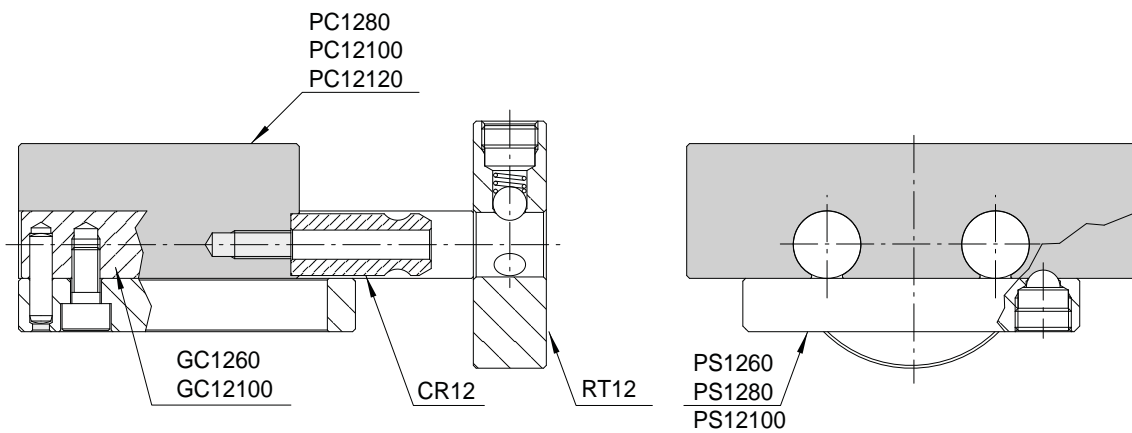
CODE: **PC12..**

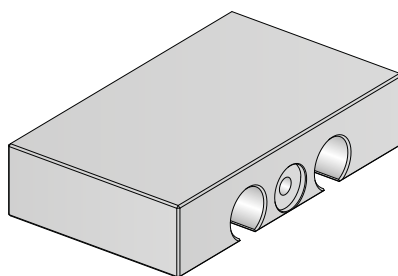


CODE	A	B	D	E	F	G	M
PC1280	18	80	6	30	12	48	M5
PC12100	18	100	6	30	12	48	M5
PC12120	18	120	6	30	12	48	M5

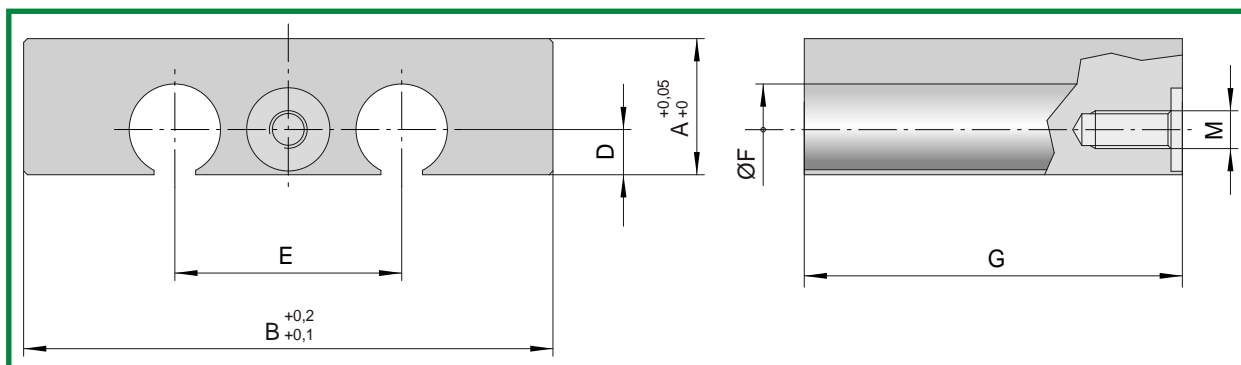
Mat.: 2311

Hardness: 1000÷1100 N/mm² (33 HRC)





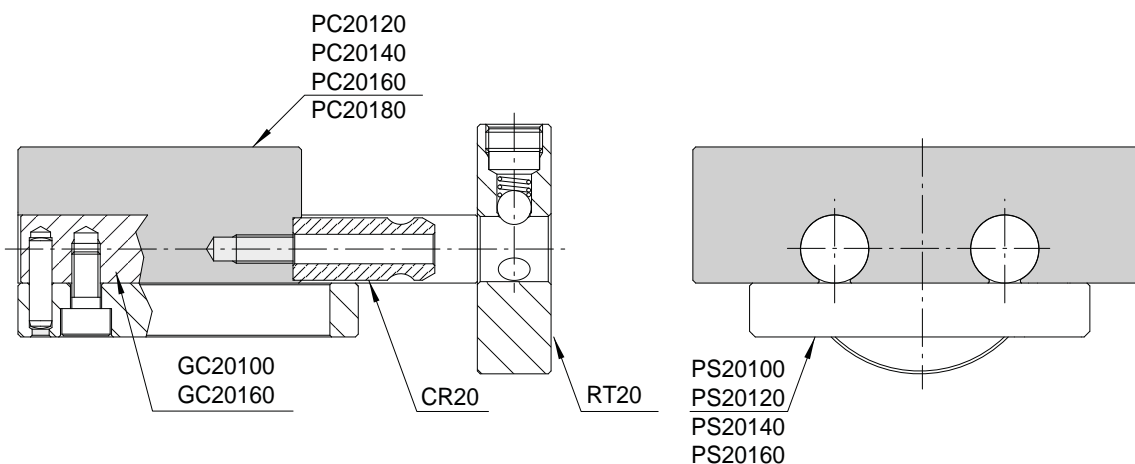
CODE: **PC20..**



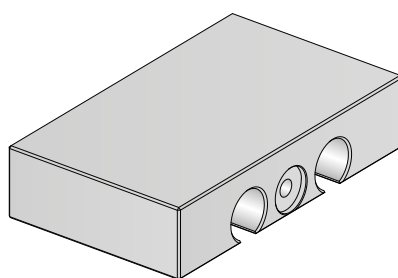
CODE	A	B	D	E	F	G	M
PC20120	28	120	10	48	20	78	M8
PC20140	28	140	10	48	20	78	M8
PC20160	28	160	10	48	20	78	M8
PC20180	28	180	10	48	20	78	M8

Mat.: 2311

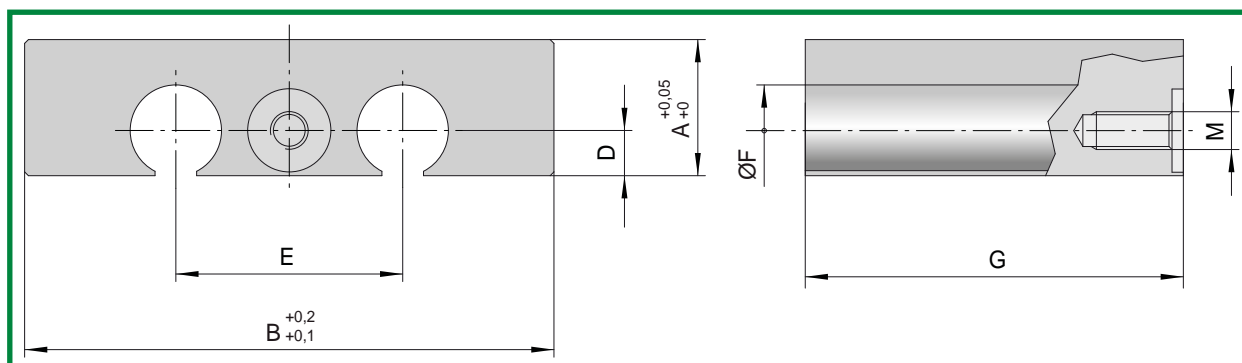
Hardness: 1000÷1100 N/mm² (33 HRC)



SLIDE BEARING SET 30



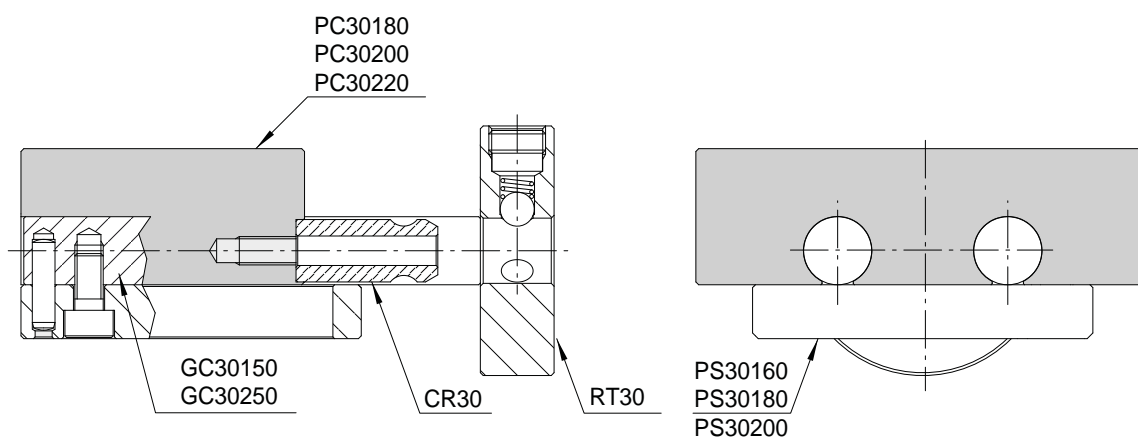
CODE: **PC30..**

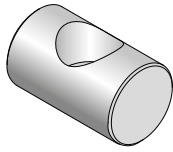


CODE	A	B	D	E	F	G	M
PC30180	48	180	15	64	30	118	M10
PC30200	48	200	15	64	30	118	M10
PC30220	48	220	15	64	30	118	M10

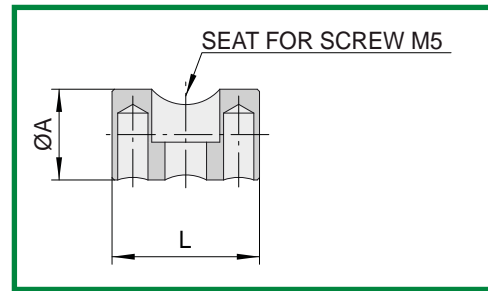
Mat.: 2311

Hardness: 1000÷1100 N/mm² (33 HRC)



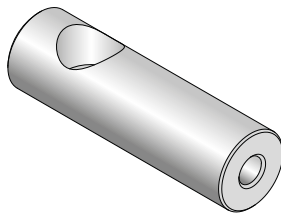


CODE: **GC1220**

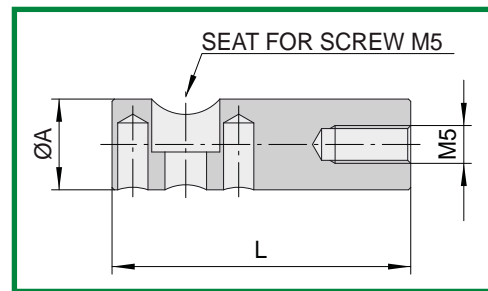


CODE	A	L
GC1220	12	20

Mat.: 7225. Hardness:670 HV05
Nitrided depth 0,3mm.
Available covered with solid antifriction lubricating.



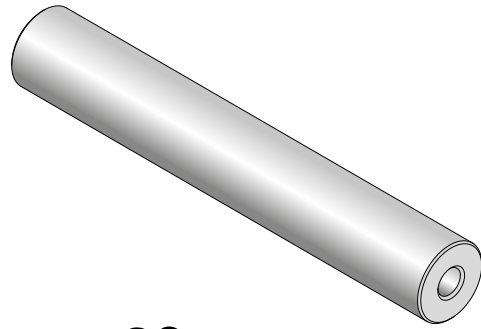
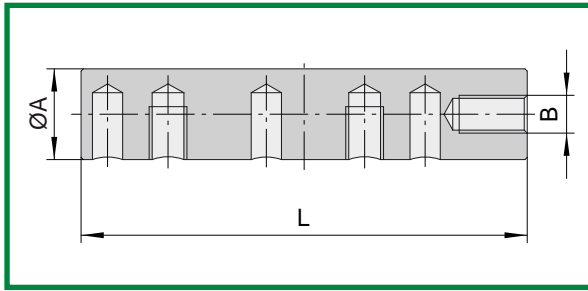
CODE: **GC1240**



CODE	A	L
GC1240	12	40

Mat.: 7225. Hardness:670 HV05
Nitrided depth 0,3mm.
Available covered with solid antifriction lubricating.

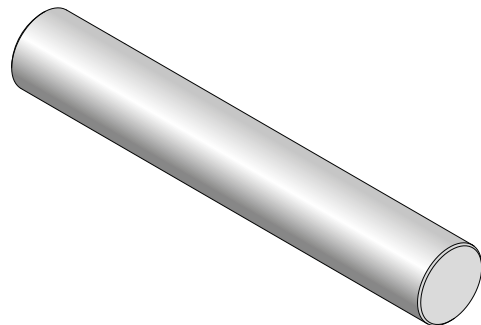
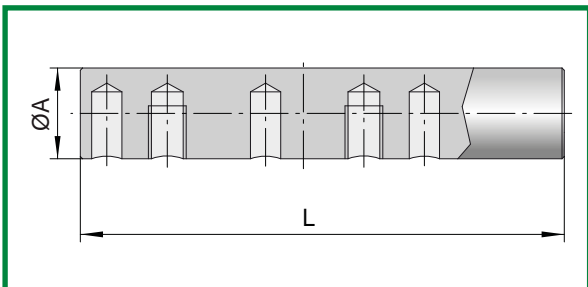
CYLINDRICAL GUIDES SET 12-20-30



CODE: **GC..**

CODE	A	B	L
GC1260	12	M5	60
GC20100	20	M8	100
GC30150	30	M10	150

Mat.: 7225. Hardness:670 HV05
Nitrided depth 0,3mm.
Available covered with solid antifriction lubricating.
Upon request special lengths available.

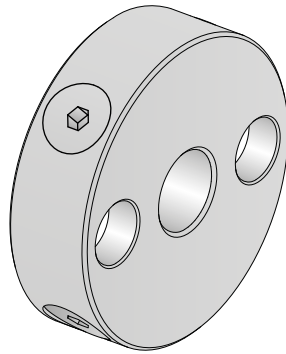


CODE: **GC..**

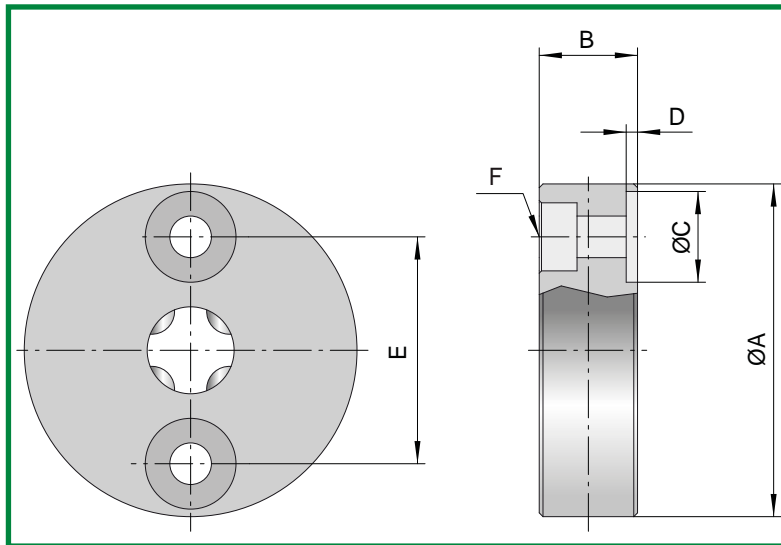
CODE	A	L
GC12100	12	100
GC20160	20	160
GC30250	30	250

Mat.: 7225. Hardness:670 HV05
Nitrided depth 0,3mm.
Available covered with solid antifriction lubricating.
Upon request special lengths available.

ROUND SLIDE RETAINER SET 12-20-30



CODE: **RT..**



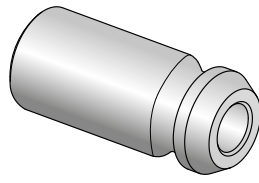
CODE	A	B	C	D	E	F	LOAD
RT12	44	13	12	1,5	30	M5	10 Kg
RT20	74	18	20	2	48	M8	20 Kg
RT30	98	20	30	2,5	64	M10	40 Kg

Mat.: 7225

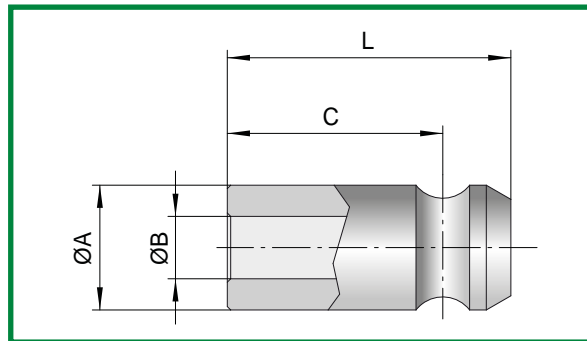
Hardness: 800 N/mm² (21,7 HRC)

Nitrided depth 0,1mm.

TANG FOR SLIDE RETAINER SET 12-20-30



CODE: **CR..**



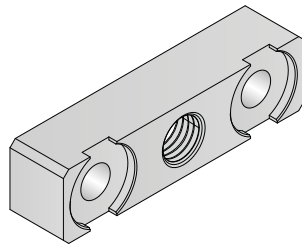
CODE	A	B	C	L
CR12	11	5,5	19	25
CR20	17	8,5	32	42
CR30	24	10,5	49,5	62,5

Mat.: 7225

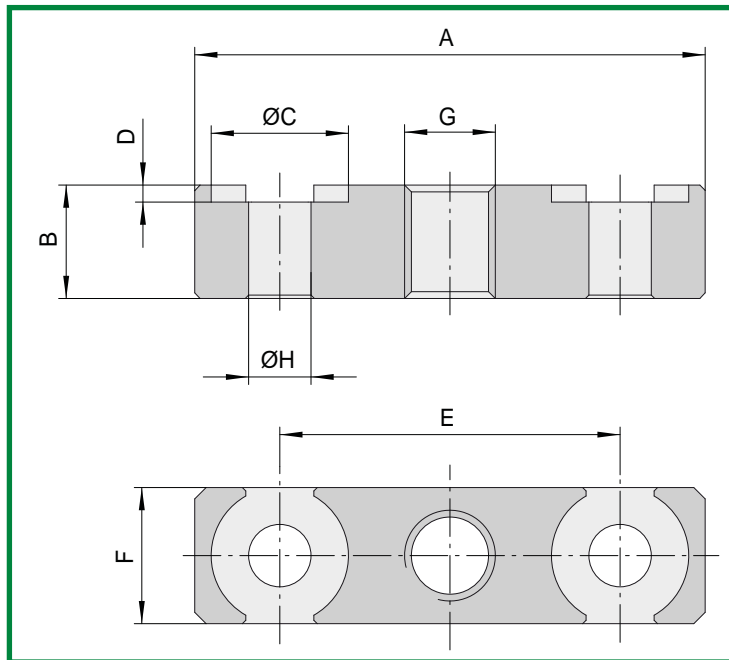
Hardness: 670 HV05

Nitrided depth 0,3mm.

FLANGE FOR SLIDE DOCKING SET 12-20-30



CODE: **PBC**



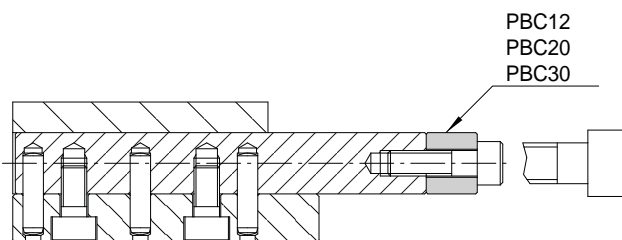
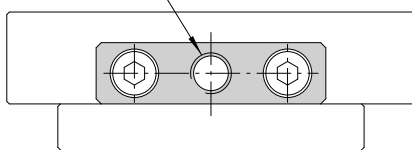
CODE	A	B	C	D	E	F	G	H
PBC12	45	10	12	1,5	30	12	M8	5,5
PBC20	75	15	20	2	48	20	M10	8,5
PBC30	100	20	30	2,5	64	30	M12	10,5

Mat.: 1191

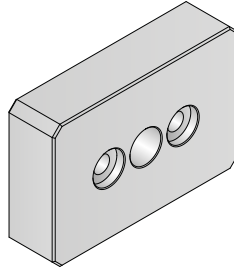
Hardness: 750 N/mm² (220 HB)

Nitrided depth 0,1mm.

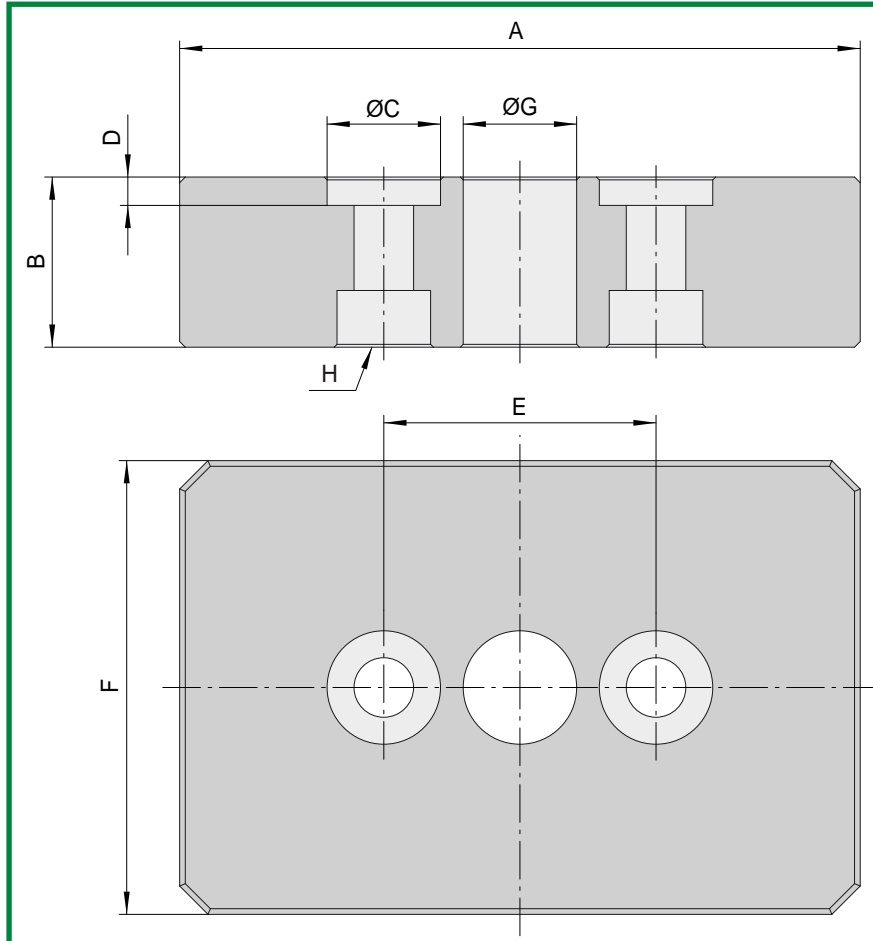
SEAT FOR BLOCKING
SCREW



BEARING FLANGE FOR CYLINDER SET 20-30



CODE: **FS..**

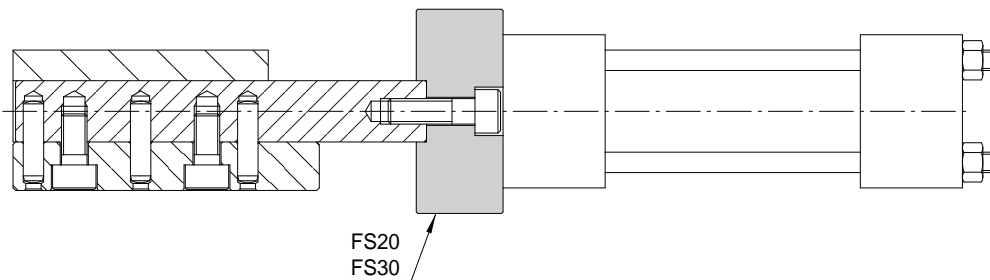


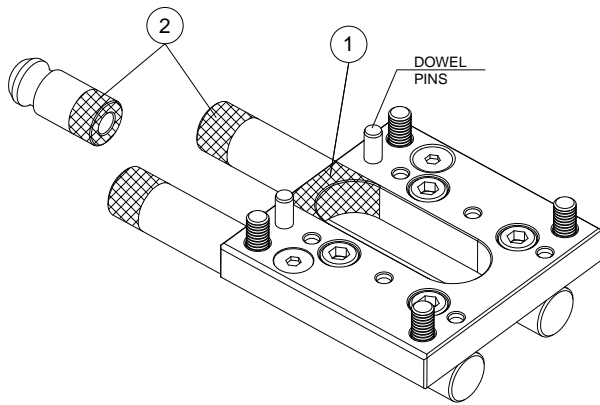
CODE	A	B	C	D	E	F	G	H
FS20	120	30	20	5	48	80	20	M10
FS30	150	40	30	6	64	90	20	M12

Mat.: 1191

Hardness: 750 N/mm² (220 HB)

Nitrided depth 0,1mm.

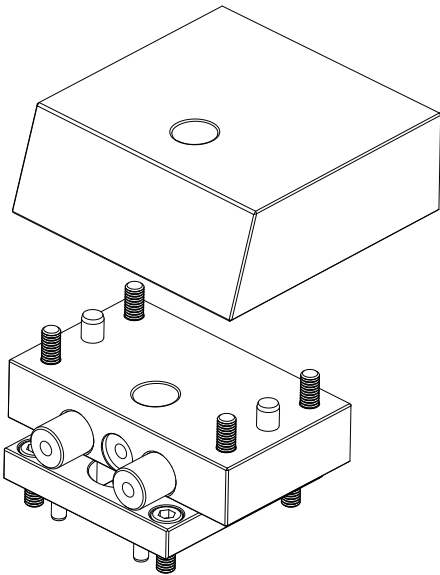




1) If necessary it is possible to modify the slot of the sliding plate **PS..** (figure point 1).

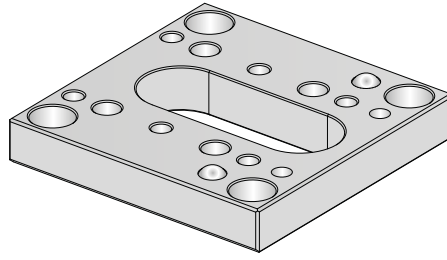
N.B.: in this case it is important to make use of the dowel pins to keep the geometry of the item and to guarantee the right working of the slide.

2) The extended cylindrical guides and the tang for slide retainer can be easily shortened as needed (figure point 2).

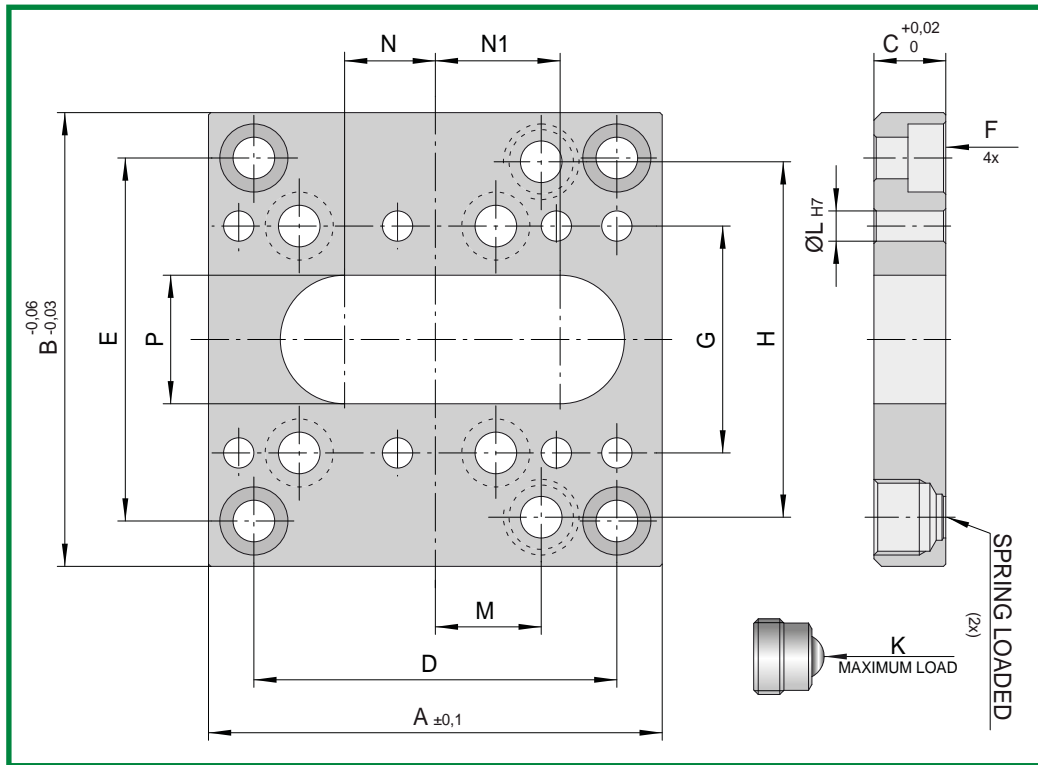


The slide bearing **PC..** works as a support for the moulding part.

SLIDING PLATE SET 12

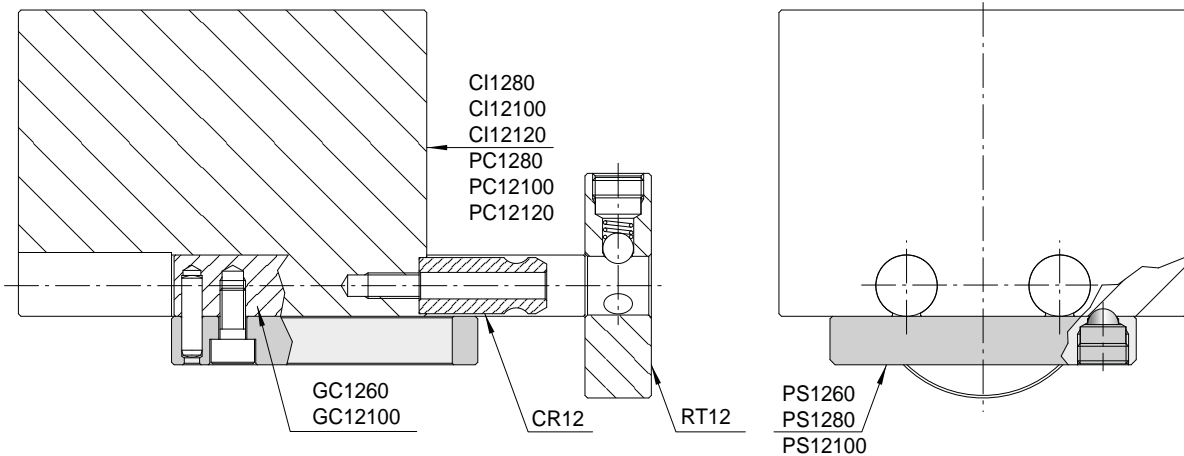


CODE: **PS12..**



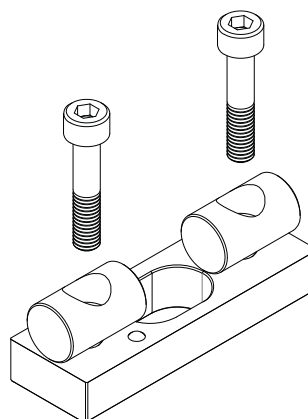
CODE	A	B	C	D	E	F	G	H	L	M	N	N1	P	K
PS1260	60	60	9,5	48	48	M5	30	47	4	14	12	16,5	17	2Kg
PS1280	60	80	9,5	48	68	M5	30	52	4	14	12	16,5	17	5Kg
PS12100	60	100	9,5	48	80	M5	30	60	4	14	12	16,5	17	5Kg

Mat.: Carbon steel. Hardness:430 HV05
 Nitrided depth 0,3mm.
 Available covered with solid antifriction lubricating.

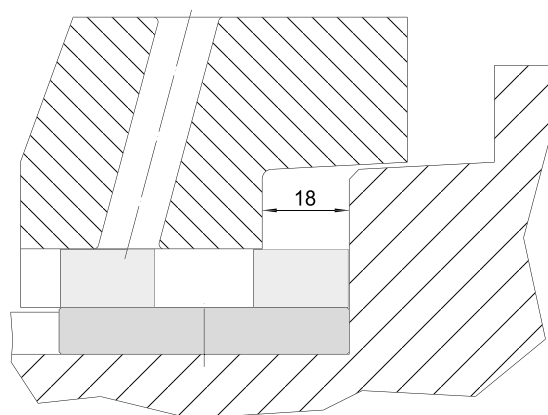


ERMANNO BALZI

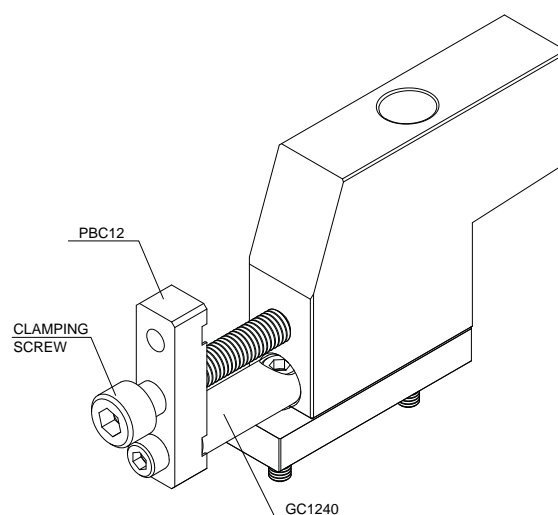
1) The slides with the single guide are fixed on the mouldbase as shown in figure.

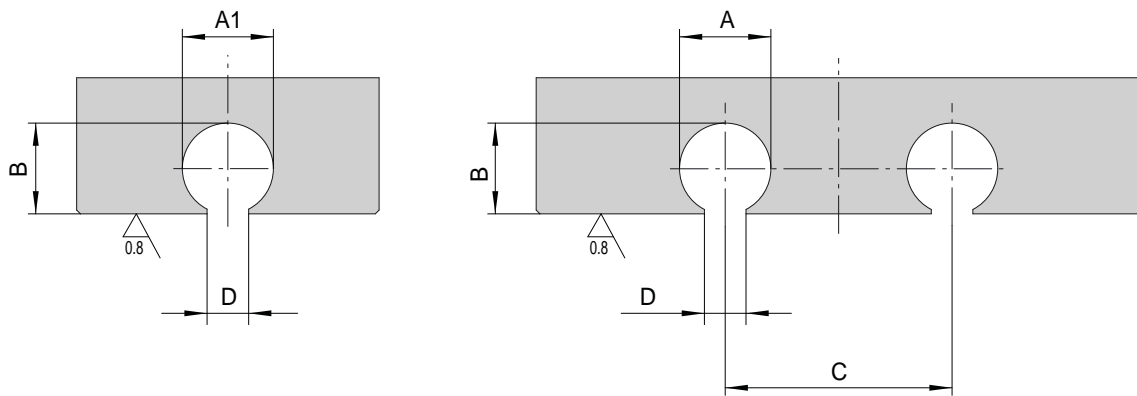


2) It is advisable to apply this slide for a maximum stroke of 18mm.

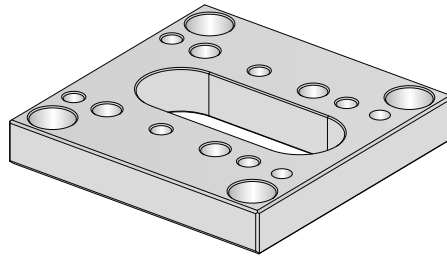


3) The flange for slide docking **PBC12** can also be used to dock the slide with the single guide.
 N.B.: for such use it is necessary to temporarily apply the extended cylindrical guide **GC1240**.

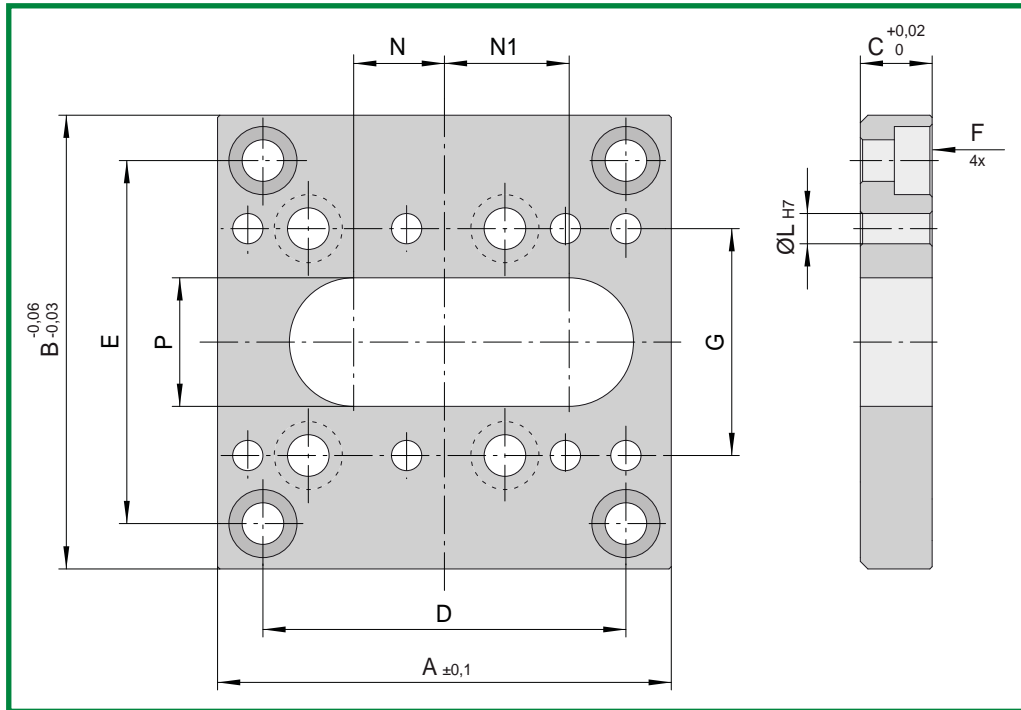




CODE	A	A1	B	C	D
12	12,08 $\begin{smallmatrix} +0,02 \\ 0 \end{smallmatrix}$	12,04 $\begin{smallmatrix} +0,02 \\ 0 \end{smallmatrix}$	12 $\begin{smallmatrix} +0,04 \\ +0,02 \end{smallmatrix}$	30	5,5 ±0,1
20	20,10 $\begin{smallmatrix} +0,05 \\ 0 \end{smallmatrix}$		20 $\begin{smallmatrix} +0,04 \\ +0,02 \end{smallmatrix}$	48	8,5 ±0,1
30	30,15 $\begin{smallmatrix} +0,05 \\ 0 \end{smallmatrix}$		30 $\begin{smallmatrix} +0,04 \\ +0,02 \end{smallmatrix}$	64	10,5 ±0,1



CODE: **PS20..**

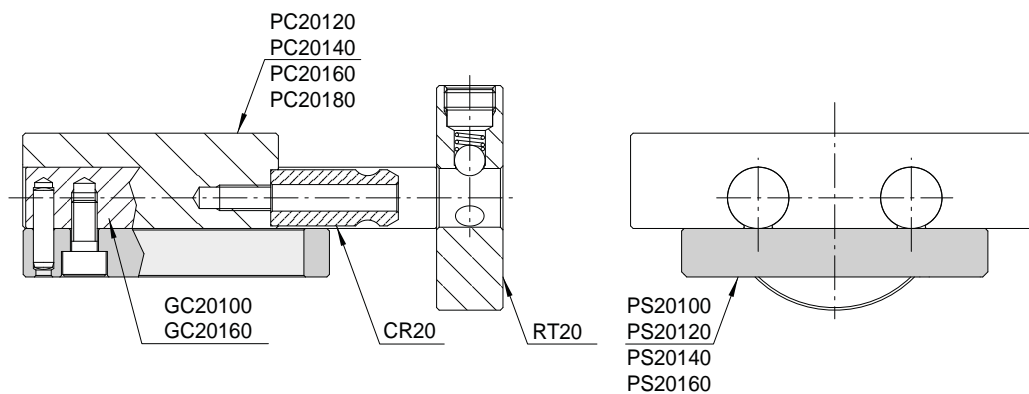


CODE	A	B	C	D	E	F	G	L	N	N1	P
PS20100	100	100	11,5	80	82	M8	48	8	23,5	27	27
PS20120	100	120	11,5	80	90	M8	48	8	23,5	27	27
PS20140	100	140	11,5	80	100	M8	48	8	23,5	27	27
PS20160	100	160	11,5	80	110	M8	48	8	23,5	27	27

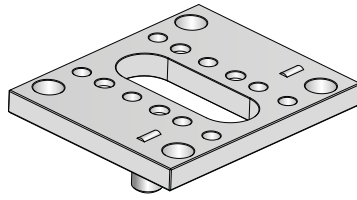
Mat.: Carbon steel. Hardness:430 HV05

Nitrided depth 0,3mm.

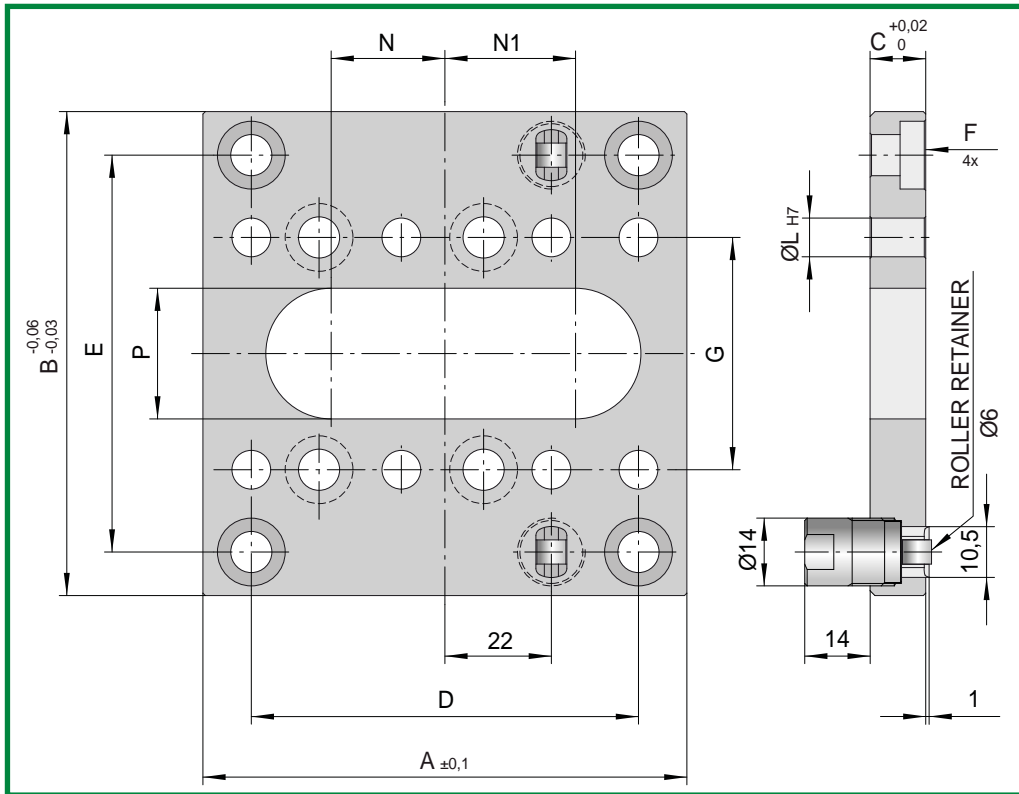
Available covered with solid antifriction lubricating.



SLIDING PATE SET 20 WITH ROLLER SLIDE RETAINER



CODE: **PSR20..**



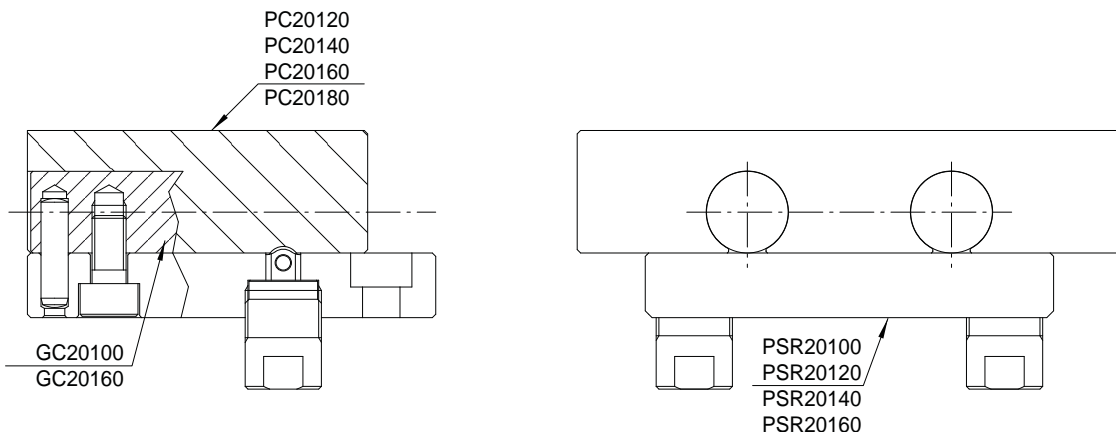
CODE	A	B	C	D	E	F	G	L	N	N1	P
PSR20100	100	100	11,5	80	82	M8	48	8	23,5	27	27
PSR20120	100	120	11,5	80	90	M8	48	8	23,5	27	27
PSR20140	100	140	11,5	80	100	M8	48	8	23,5	27	27
PSR20160	100	160	11,5	80	110	M8	48	8	23,5	27	27

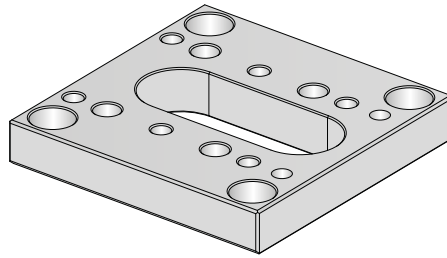
Maximum load 20 Kg.

Carbon steel. Hardness:430 HV05

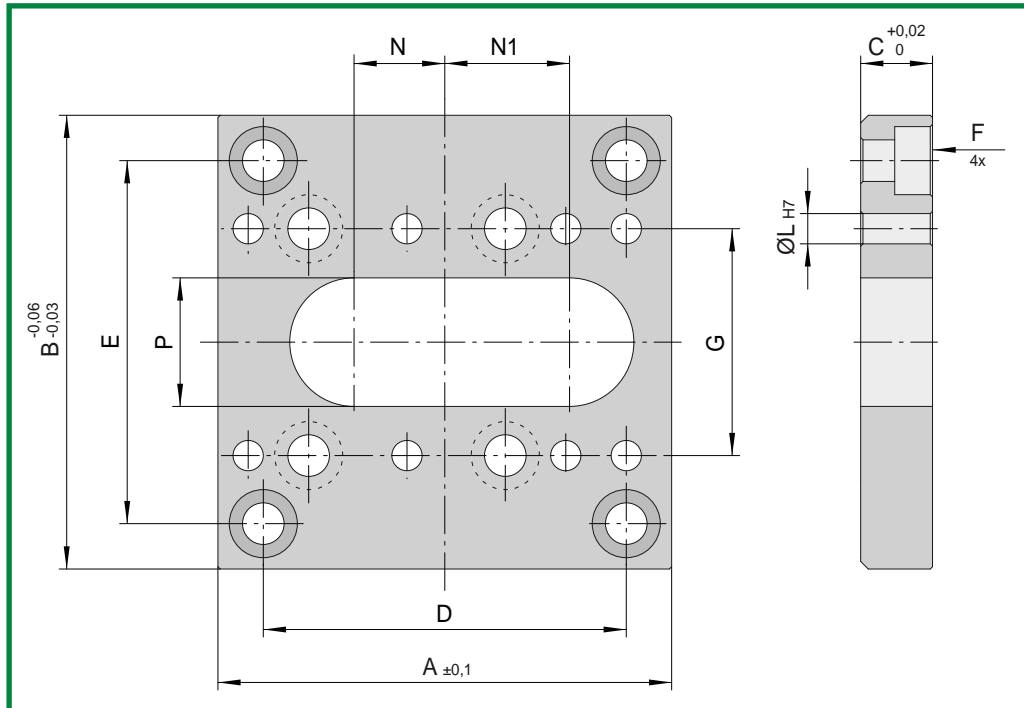
Nitrided depth 0,3mm.

Available covered with solid antifriction lubricating.



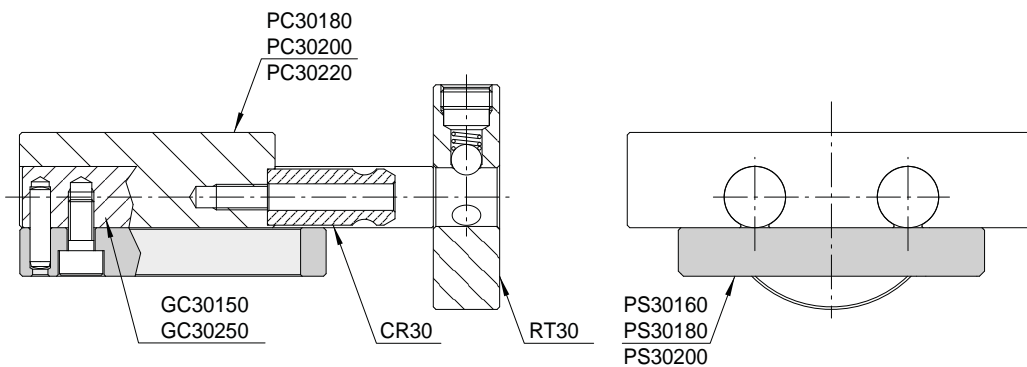


CODE: **PS30..**

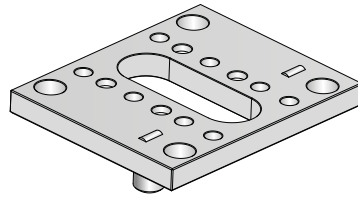


CODE	A	B	C	D	E	F	G	L	N	N1	P
PS30160	150	160	14,5	120	120	M10	64	10	45	49	34
PS30180	150	180	14,5	120	120	M10	64	10	45	49	34
PS30200	150	200	14,5	120	140	M10	64	10	45	49	34

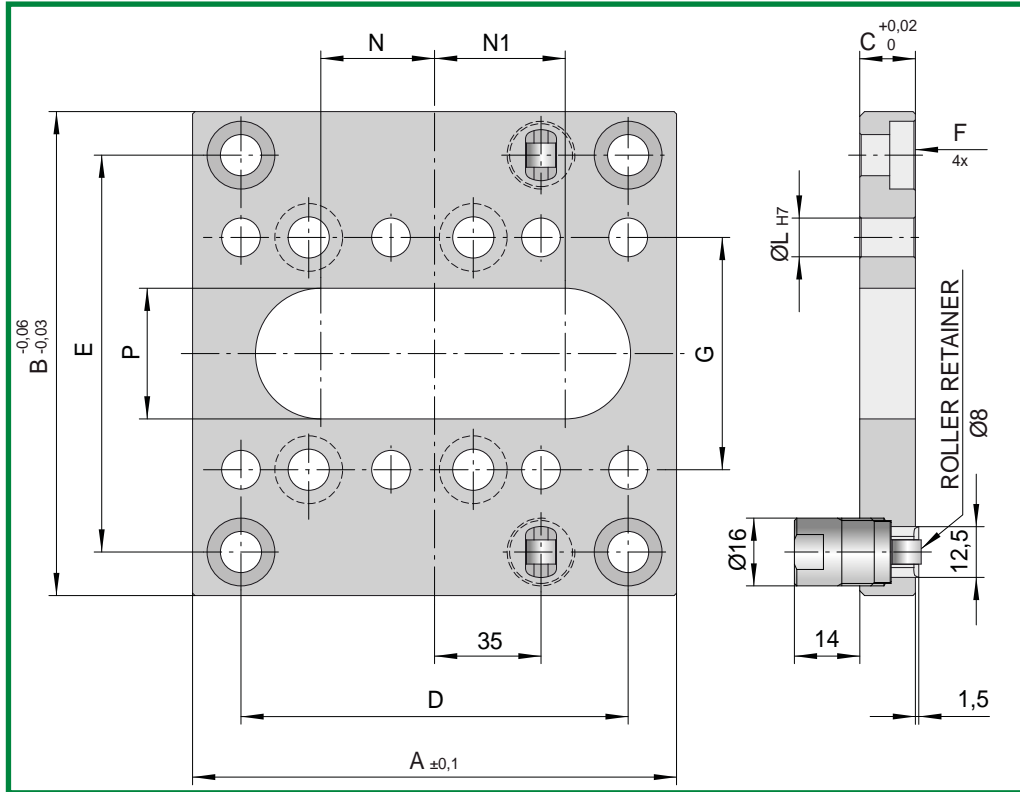
Mat.: Carbon steel. Hardness:430 HV05
 Nitrided depth 0,3mm.
 Available covered with solid antifriction lubricating.



SLIDING PATE SET 30 WITH ROLLER SLIDE RETAINER



CODE: **PSR30..**



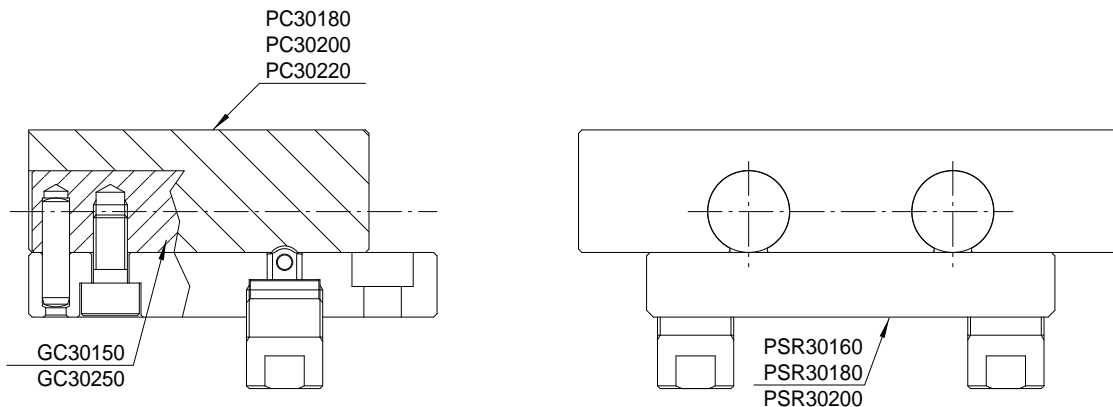
CODE	A	B	C	D	E	F	G	L	N	N1	P
PSR30160	150	160	14,5	120	120	M10	64	10	45	49	34
PSR30180	150	180	14,5	120	120	M10	64	10	45	49	34
PSR30200	150	200	14,5	120	140	M10	64	10	45	49	34

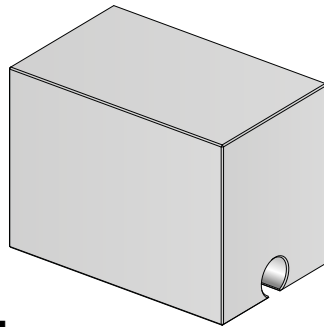
Maximum load 40 Kg.

Carbon steel. Hardness:430 HV05

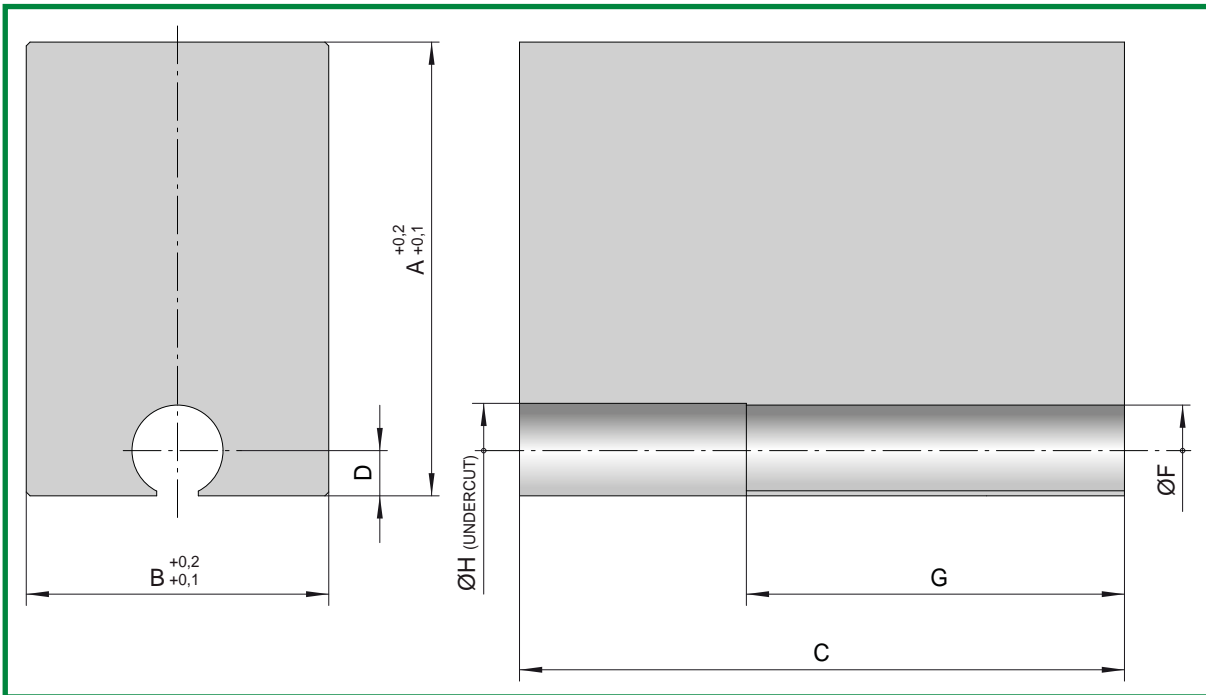
Nitrided depth 0,3mm.

Available covered with solid antifriction lubricating.





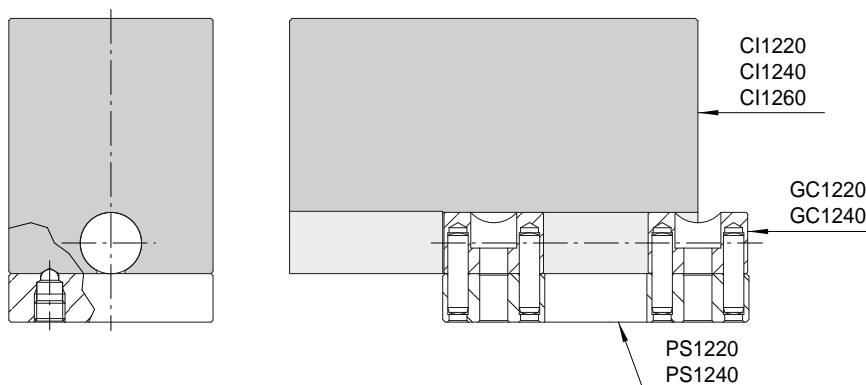
CODE: **CI12..**

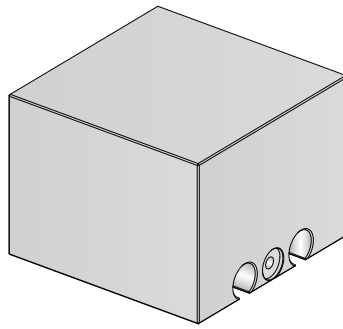


CODE	A	B	C	D	F	G	H
CI1220	60	20	80	6	12	50	12,5
CI1240	60	40	80	6	12	50	12,5
CI1260	60	60	80	6	12	50	12,5

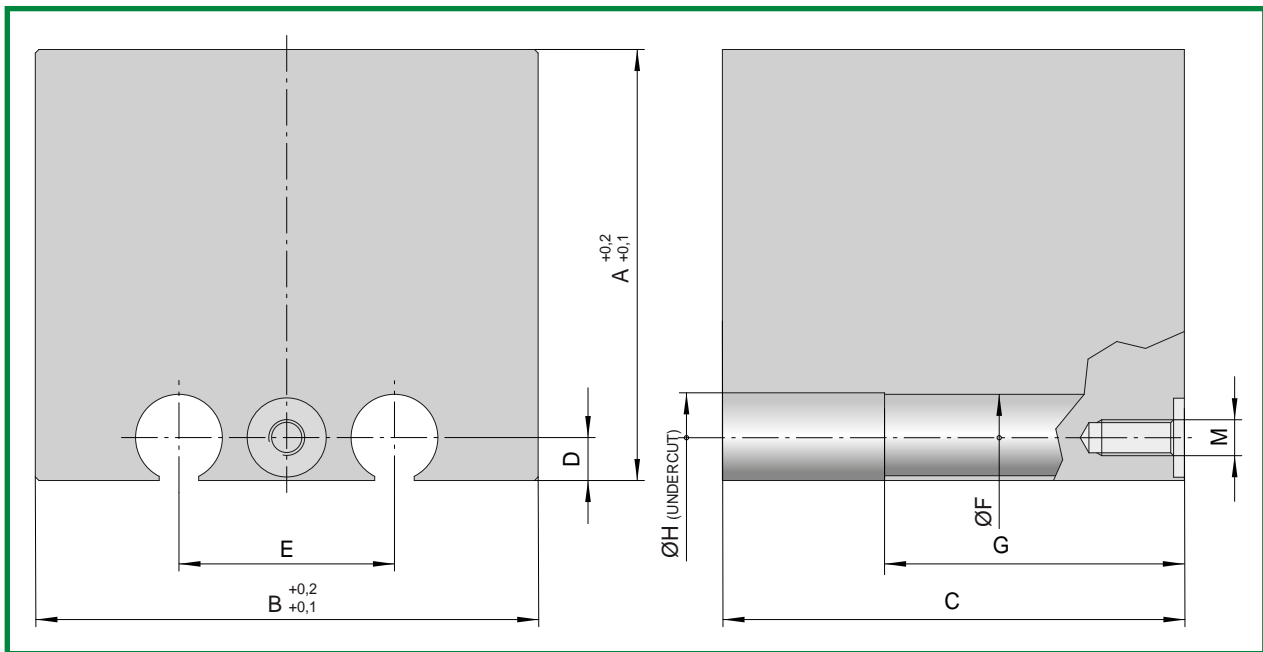
Mat.: 2311

Hardness: 1000÷1100 N/mm² (33 HRC)





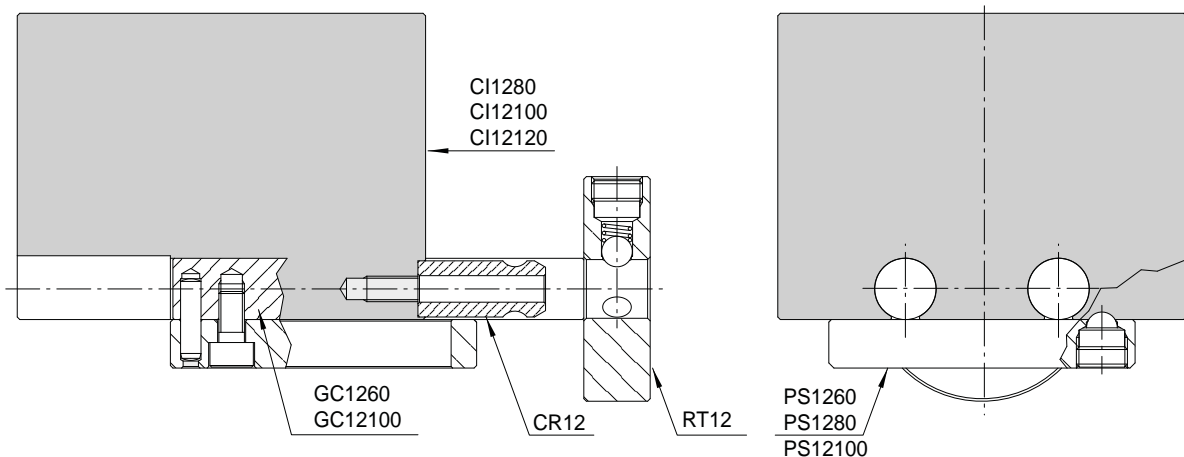
CODE: **CI12..**

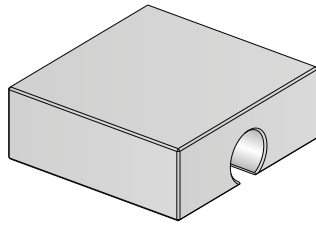


CODE	A	B	C	D	E	F	G	H	M
CI1280	60	80	80	6	30	12	50	12,5	M5
CI12100	60	100	80	6	30	12	50	12,5	M5
CI12120	60	120	80	6	30	12	50	12,5	M5

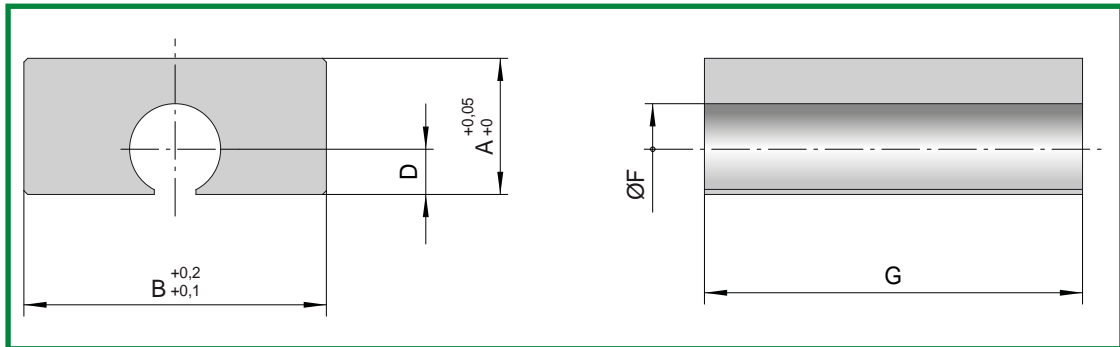
Mat.: 2311

Hardness: 1000÷1100 N/mm² (33 HRC)





CODE: **PC12..**



CODE	A	B	D	F	G
PC1240	18	40	6	12	48
PC1260	18	60	6	12	48

Mat.: 2311

Hardness: 1000÷1100 N/mm² (33 HRC)

