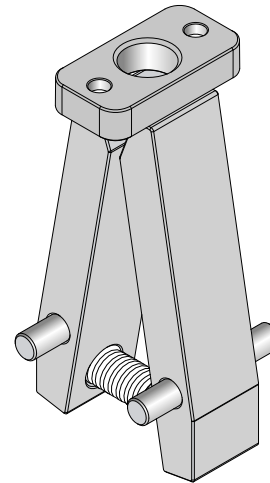
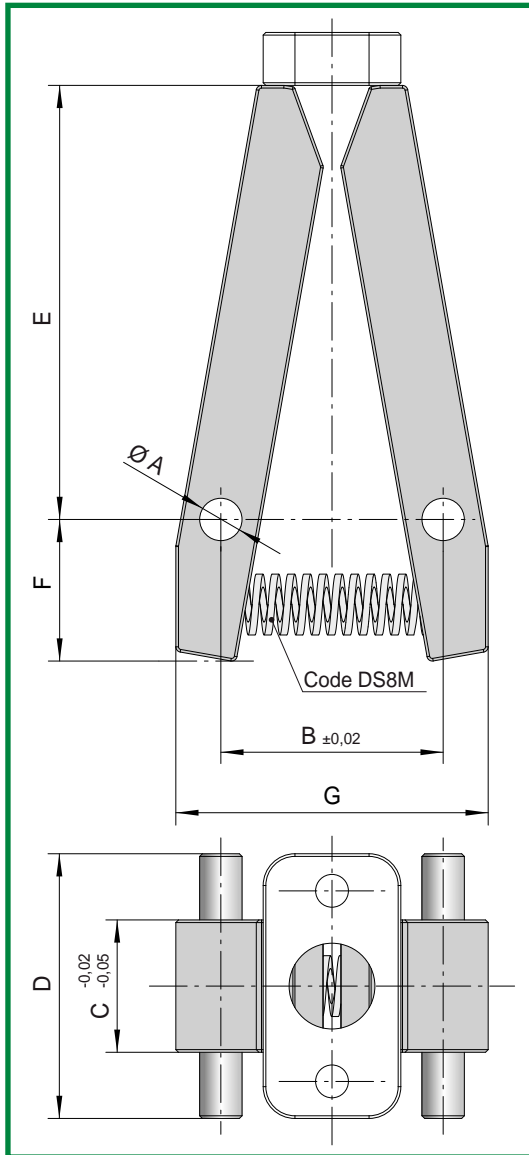


PLATE LOCKS LEVERS DS

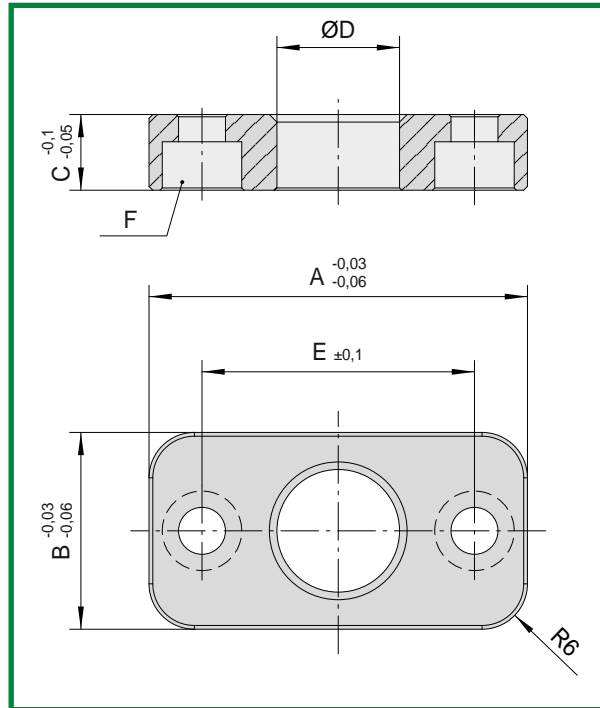


CODE: **DS8L**

| CODE | A | B | C | D | E | F | G |
|------|---|----|----|----|----|----|----|
| DS8L | 8 | 42 | 25 | 50 | 82 | 27 | 60 |

Mat.: Carbon steel. Hardness: 540 HRV
Carbonitrided depth 0,5mm

PUSH PLATE DS

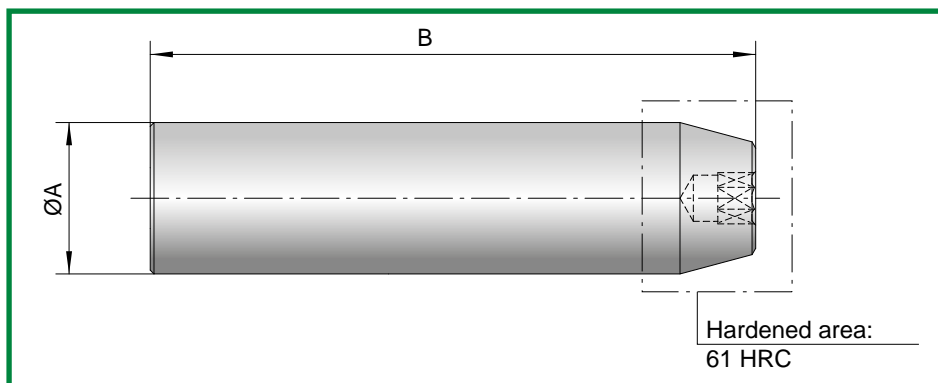


CODE: **DS8PA**

| CODE | A | B | C | D | E | F |
|-------|----|----|----|------|----|----|
| DS8PA | 50 | 26 | 10 | 16,2 | 36 | M6 |

Mat.: Carbon steel. Hardness: 540 HRV
Carbonitrided depth 0,5mm

RELEASE ROD DS

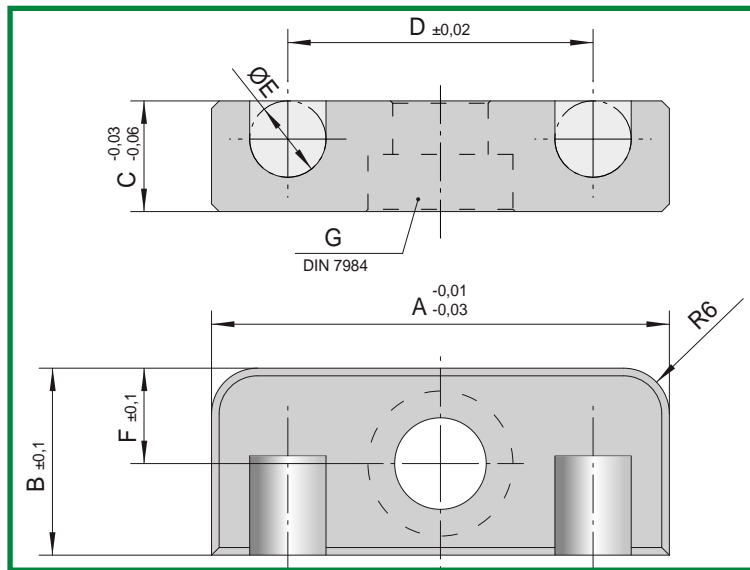


CODE: **DS8P**

| CODE | A | B |
|------|----|-----|
| DS8P | 16 | 200 |

Mat.: 7225. Hardness: 800 N/mm² (21,7 HRC)
Nitrided depth 0,1mm

DOWELS HOLDING PLATE DS

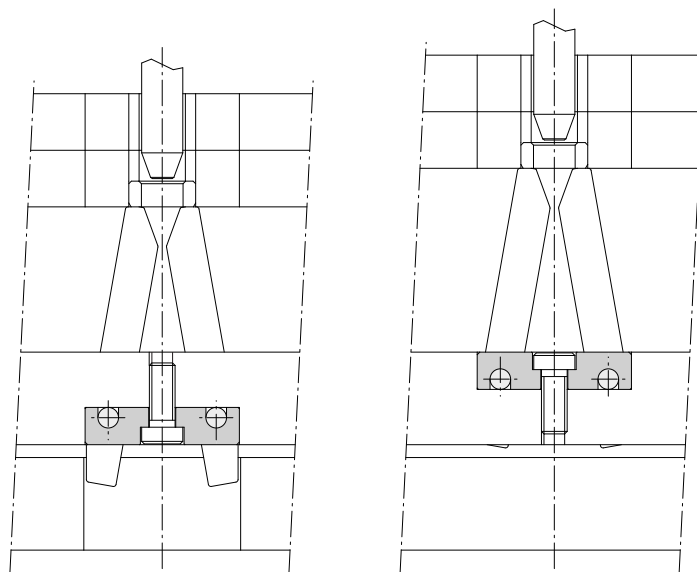


CODE: **DS8PS**

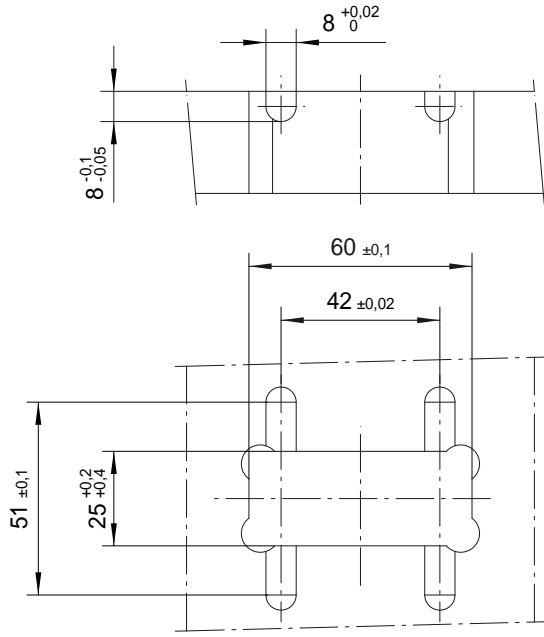
| CODE | A | B | C | D | E | F | G |
|-------|----|------|------|----|---|------|-----|
| DS8PS | 60 | 24,5 | 14,5 | 42 | 8 | 12,5 | M12 |

Mat.: Carbon steel. Hardness: 540 HRV
Nitrided depth 0,3mm

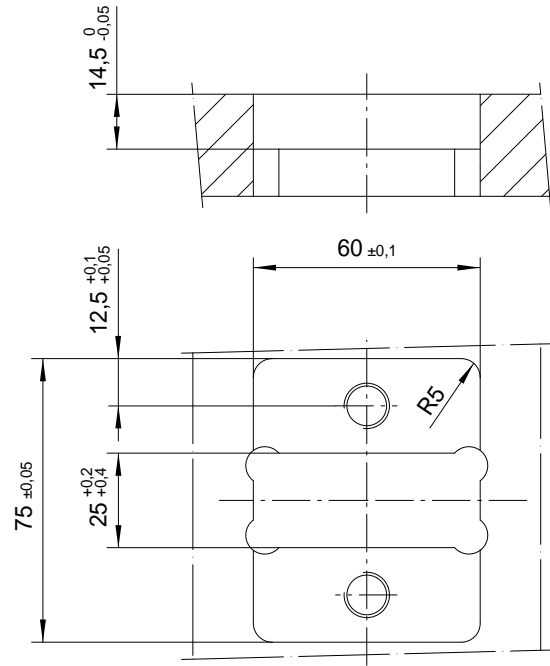
TECHNICAL NOTES



• Dowels holding plate application examples.

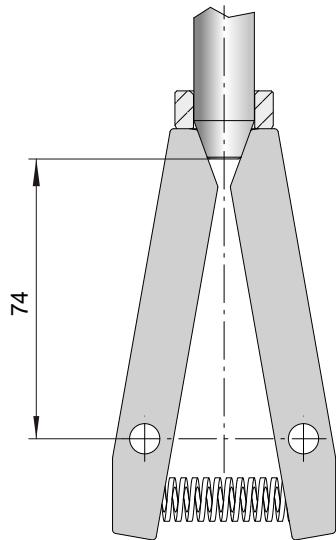


- Suggested seat machining for application without dowels holding plate.

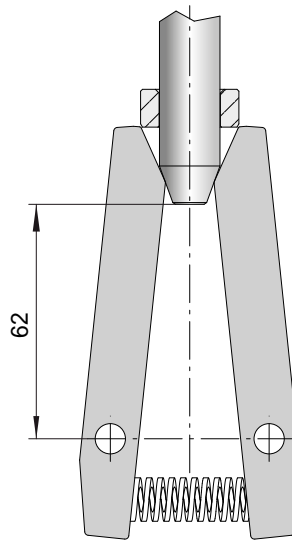


- Suggested seat machining for application with dowels holding plate.

MINIMUM STROKE



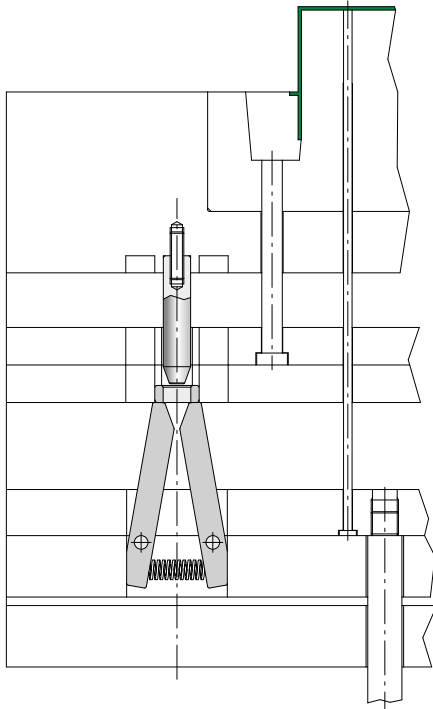
RELEASE STARTING POINT



RELEASE ENDING POINT

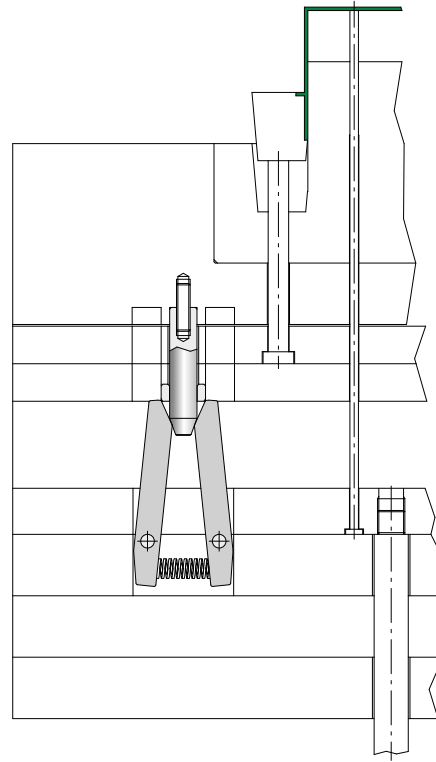
- In order to guarantee a complete release of the system a minimum 12 mm stroke is needed.

DOUBLE EJECTION APPLICATION



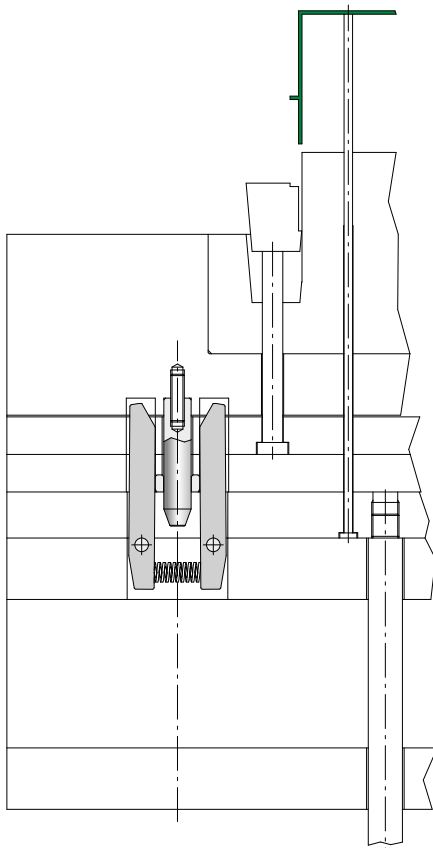
STARTING POSITION

- DS system keeps the ejector plates spaced



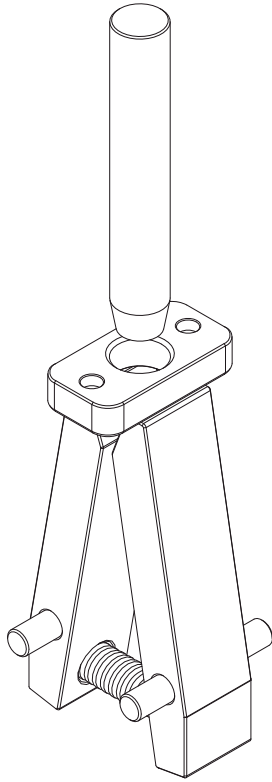
FIRST STROKE

- The lower ejector plate transmits the movement to the upper ejector plate through the DS system. The ejector plates move keeping mutual distance till the achievement of the DS releasing point.



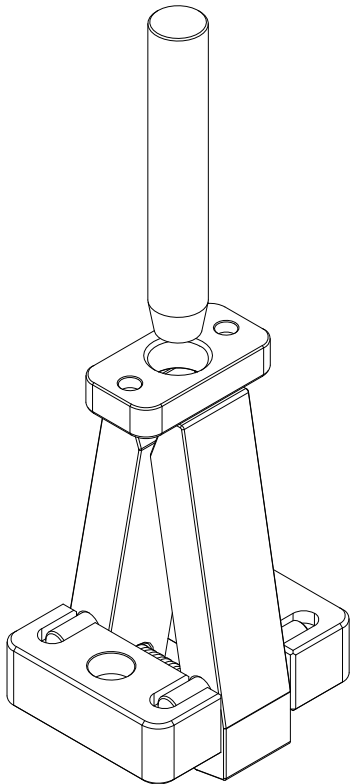
SECOND STROKE

- After the releasing of the DS system the lower ejector plate performs the second stroke



| CODE KIT | CODE | COMPONENTS |
|----------|-------|---------------------------|
| DS8K1 | DS8L | PLATE LOCKS LEVERS DS (2) |
| | DS8PA | PUSH PLATE DS |
| | DS8P | RELEASE ROD DS |

Kit includes: dowel pins Ø8x50 (2) - fixing screws M6x12 (2)
- recovery spring



| CODE KIT | CODE | COMPONENTS |
|----------|-------|-----------------------------|
| DS8K2 | DS8L | PLATE LOCKS LEVERS DS (2) |
| | DS8PA | PUSH PLATE DS |
| | DS8PS | DOWELS HOLDING PLATE DS (2) |
| | DS8P | RELEASE ROD DS |

Kit includes: dowel pins Ø8x50 (2) - fixing screws M6x12(2) -
fixing screws M12x25 DIN 7984 (2) - recovery springs