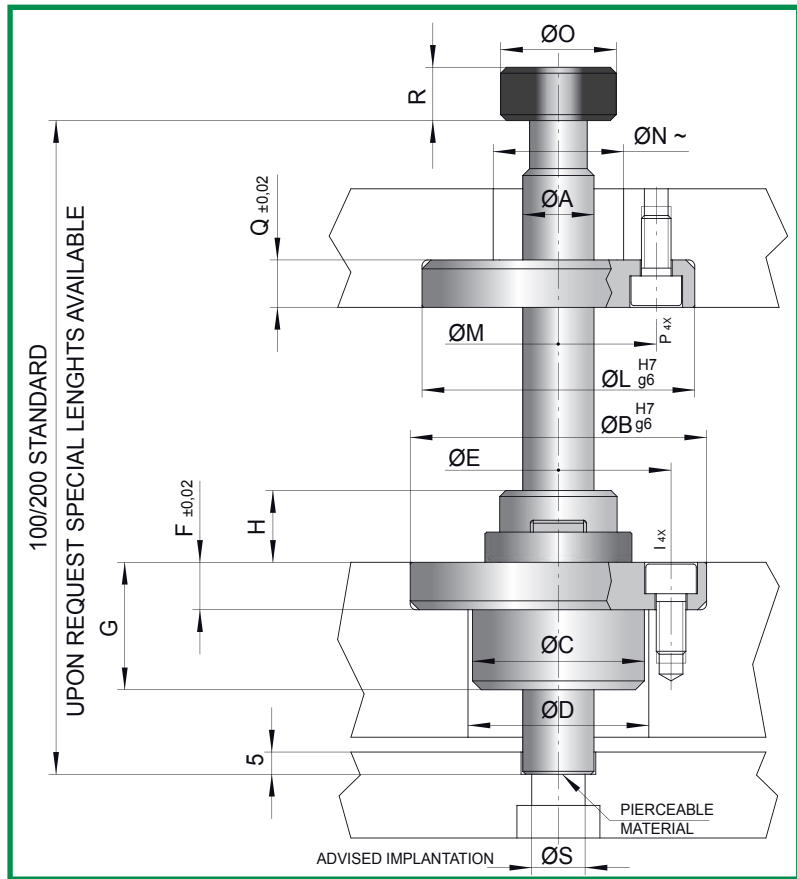
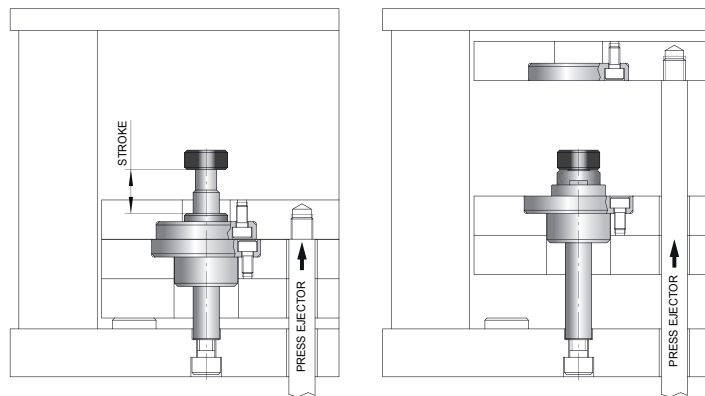


CODE: **AS**

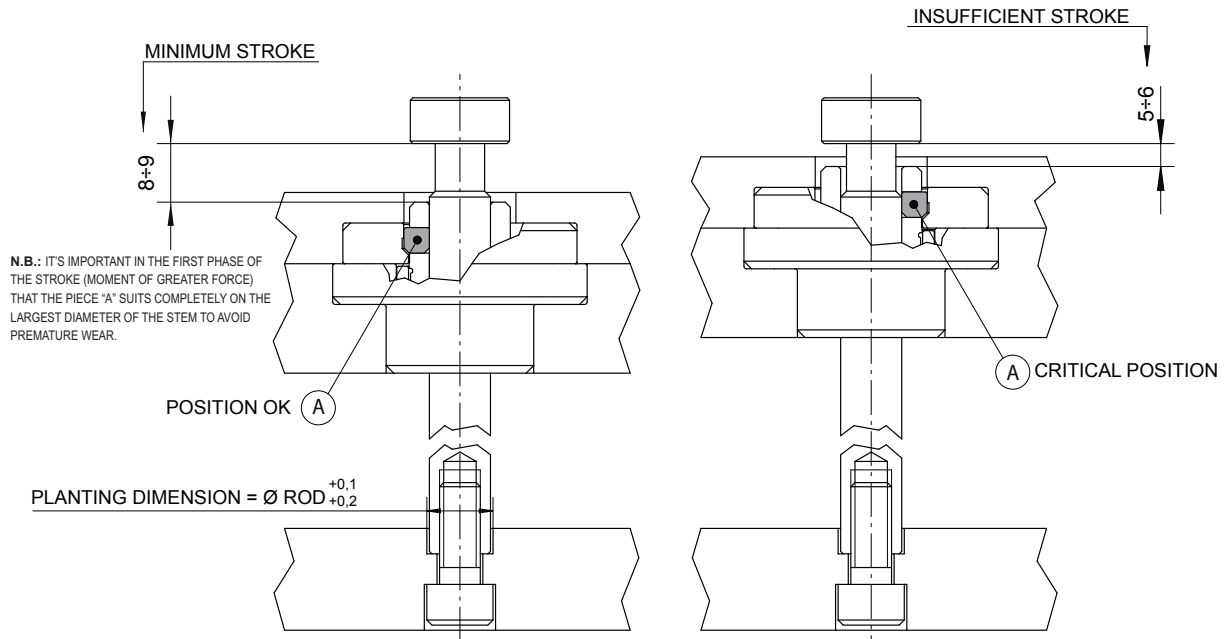


CODE	A	B	C	D	E	F	G	H	I	L	M	N	O	P	Q	R	S	MAX DYNAMIC LOAD
AS-12	12	50	29	29,5	38	8	21,5	12	M5	46	33	22	19,5	M5	8	9	M8	Kg100
AS-16	16	70	41	41,5	52	13	28	17	M8	70	52	33	29	M8	13	12	M10	Kg300

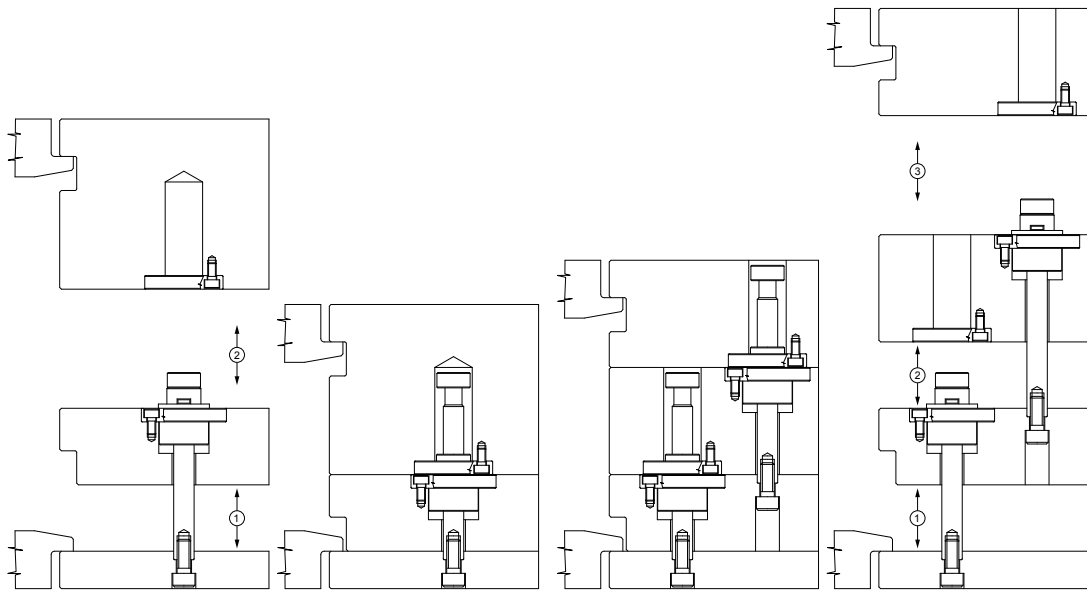


CHARACTERISTICS

- 1) EASE OF APPLICATION;
 - 2) VERSATILITY OF USE;
 - 3) BLOCKAGE OF THE TRAILED PLATE AFTER UNHOOKING;
 - 4) WITHOUT LIMIT OF STROKE;
- N.B.: IT'S IMPORTANT TO OBSERVE THE SUGGESTED MAXIMUM WORKING LOADS.
IN CASE OF UNCERTAIN APPLICATIONS CONSULT THE CONSTRUCTOR.



EXAMPLES OF APPLICATION



SPECIAL APPLICATION

