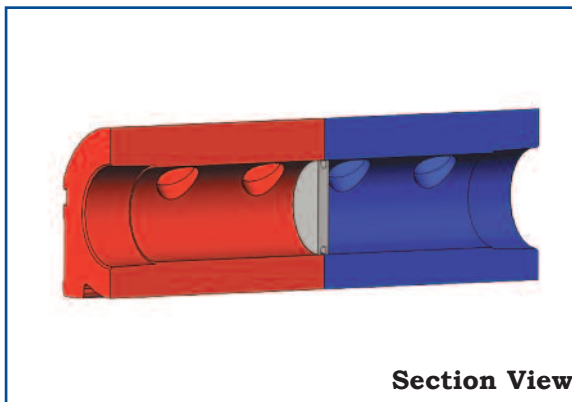




DUOFLOW™ ALUMINUM MANIFOLDS



Section View

General Description

SMARTFLOW® DUOFLOW™ Manifolds are robust extruded aluminum manifolds similar to the original Smartflow one-piece design. The manifolds are divided internally and anodized half red and half blue to denote supply and return on a single manifold. No end plug is needed.

The Duoflow design provides a shorter footprint specifically for mounting a manifold directly to an injection mold, or where space is limited. Port spacing is narrow for installation of hose barbs or quick disconnect fittings only. Ball valves are not recommended.

Tool change time is significantly decreased by mounting manifolds directly to molds in storage. Water hookup is simplified to "Supply" and "Return" lines versus individual water lines for every circuit.

See pages 2-4 for custom manifold part number information.

Features and Benefits

- ◆ **Shorter Length** for easier mounting directly to injection molds
- ◆ **Mold-Mount** to speed mold changes
- ◆ **Economical, Proven Design** for reliability
- ◆ **Optional Quick Disconnect Fittings** for convenience and ease of installation

Specifications

Inlet Size	3/4", 1" or 1-1/2"
	NPT(F) standard
	British threads optional
Port Sizes	1/4", 3/8" & 1/2"
	NPT(F) standard
	British threads optional
	Contact the factory for special machining requirements
Max. Pressure	150psi (10bar)
Max. Temperature	210°F (99°C)
Body Material	Aluminum
Divider	Stainless Steel
O-Ring	EPDM

**burrer &
brown
engineering, inc.**

Tel. 800-764-3518
www.smartflow-usa.com

*Design and specifications are
subject to change without notice.*

3/4" DUOFLOW™ ALUMINUM MANIFOLDS

Model Number

6SDA - 16 - 2 - 13 - A YZ

Supply Threads

NPT
British Parallel
British Taper

6SDA
6BSDA
6TSDA

Total Number of Ports

4
to
16

Port Sizes

1/4"NPT(F)
1/4"BSPP(F)
1/4"BSPT(F)

2
2B
2T

Accessories

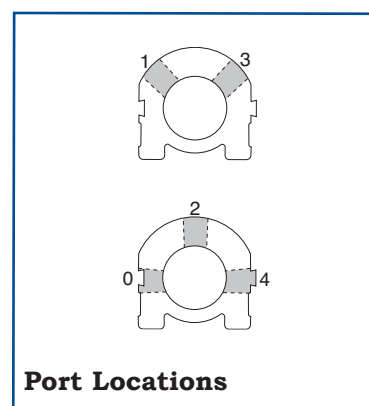
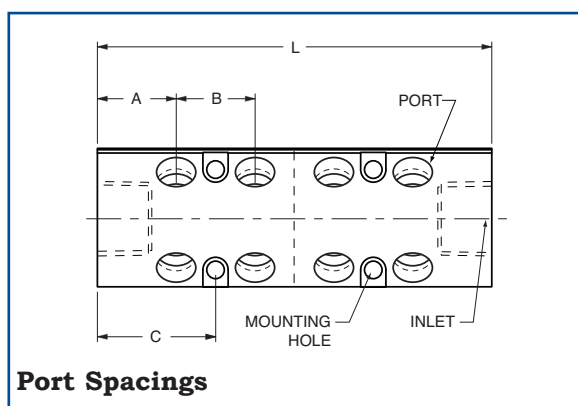
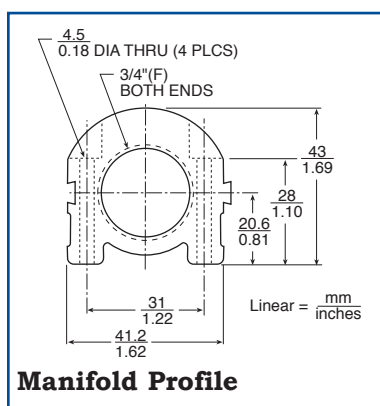
A Manifold only
H Port Quick Connect Plugs
J Port Hose Barbs
Quick connect plugs and hose barbs are sized to match the ports. Contact the factory if different sizes or options are required. Ball valves are not recommended.

Port Locations

13 Left & Right 45°
024 Left, Center & Right

NOTE: For 3/4" and 1" Manifolds, use port locations 1 & 3 or 0, 2, & 4 in combination for proper port spacing. See diagram below.

Please contact the factory for custom manifold configurations.



Stocked 3/4"NPT Manifolds

Model Number	Port Size	Total Ports	Ports Per End	A	B	C	Length L		Weight	
							mm	in.	kg	lbs.
6SDA- 8-2-13-AYZ	1/4"NPT	8	4	25.4mm	25.4mm	38mm	127	5	.3	.75
6SDA-12-2-13-AYZ		12	6	1"	1"	1.5"	178	7	.5	1.1
6SDA-16-2-13-AYZ		16	8				229	9	.6	1.4

1" DUOFLOW™ ALUMINUM MANIFOLDS

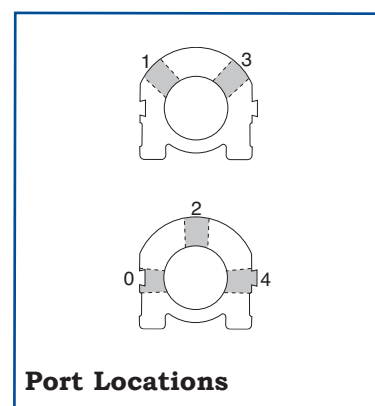
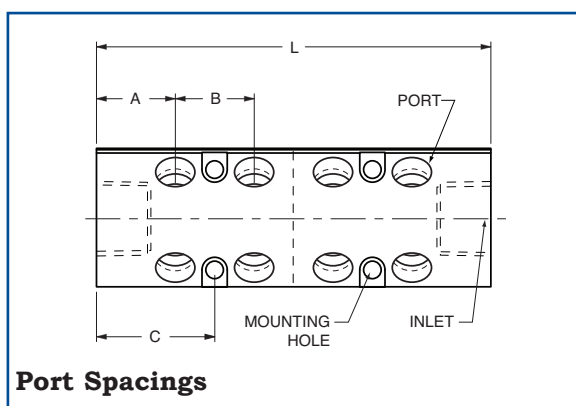
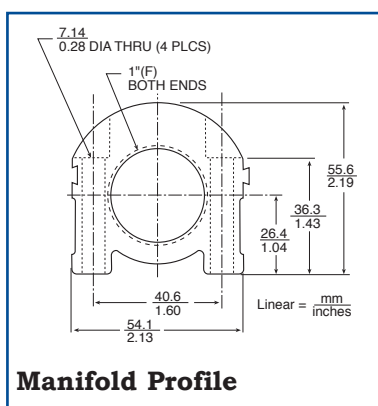
Model Number

8SDA - 16 - 3 - 13 - A YZ

<p>Supply Threads</p> <p>NPT British Parallel British Taper</p>	<p>8SDA 8BSDA 8TSDA</p>	<p>Total Number of Ports</p> <p>4 to 16</p>	<p>Port Sizes</p> <p>3/8"NPT(F) 3/8"BSPP(F) 3/8"BSPT(F)</p>	<p>Accessories</p> <p>A Manifold only H Port Quick Connect Plugs J Port Hose Barbs</p> <p>Quick connect plugs and hose barbs are sized to match the ports. Contact the factory if different sizes or options are required. Ball valves are not recommended.</p>	<p>Port Locations</p> <p>13 Left & Right 45° 024 Left, Center & Right</p>
--	--	--	--	---	--

NOTE: For 3/4" and 1" Manifolds, use port locations 1 & 3 or 0, 2, & 4 in combination for proper port spacing. See diagram below.

Please contact the factory for custom manifold configurations.



Stocked 1"NPT Manifolds										
Model Number	Port Size	Total Ports	Ports Per End	A	B	C	Length L		Weight	
							mm	in.	kg	lbs.
8SDA- 8-3-13-AYZ	3/8"NPT	8	4	32mm	32mm	47.6mm	159	6.3	.8	1.7
8SDA- 12-3-13-AYZ		12	6	1.25"	1.25"	1.88"	222	8.8	1.1	2.4
8SDA- 16-3-13-AYZ		16	8				286	11.3	1.4	3.1

1-1/2" DUOFLOW™ ALUMINUM MANIFOLDS

Model Number

12SDA - 16 - 4 - 13 - A YZ

Supply Threads

NPT
British Parallel
British Taper

12SDA
12BSDA
12TSDA

Total Number
of Ports 4
to 16

Port Sizes

1/2"NPT(F) 4
1/2"BSPP(F) 4B
1/2"BSPT(F) 4T

Accessories

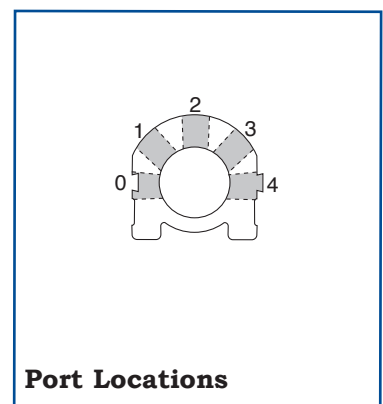
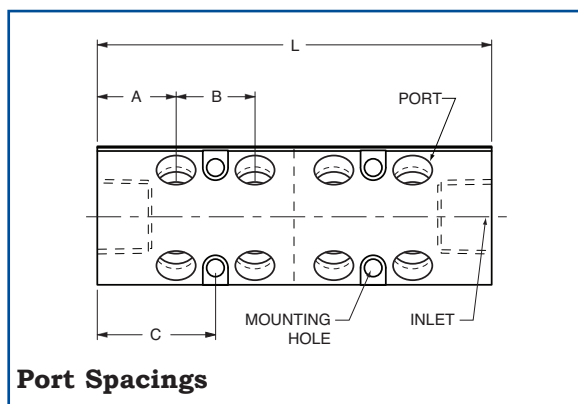
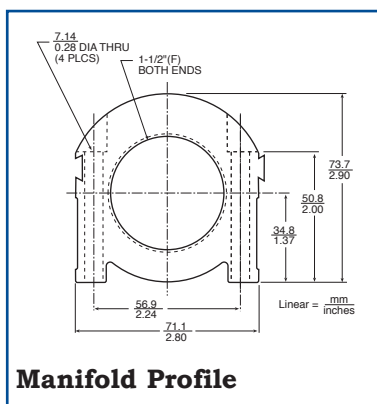
A Manifold only
H Port Quick Connect Plugs
J Port Hose Barbs
Quick connect plugs and hose barbs are sized to match the ports. Contact the factory if different sizes or options are required. Ball valves are not recommended.

Port Locations

0 Left Side
1 Left 45°
2 Center
3 Right 45°
4 Right Side

NOTE: Port locations 0 thru 4 may be used in any combination on 1-1/2" Aluminum Manifolds.

Please contact the factory for custom manifold configurations.



Stocked 1-1/2"NPT Manifolds										
Model Number	Port Size	Total Ports	Ports Per End	A	B	C	Length L		Weight	
							mm	in.	kg	lbs.
12SDA- 8-4-13-AYZ	1/2"NPT	8	4	44.5mm	38mm	63.5mm	203	8	1.6	3.5
12SDA-12-4-13-AYZ		12	6	1.75"	1.5"	2.5"	279	11	2.2	4.9
12SDA-16-4-13-AYZ		16	8				356	14	2.8	6.2